

TAMM41 Rabbit Polyclonal Antibody



CAB8374

Product Information

Size:

20uL, 50uL, 100uL, 200uL

Observed MW:

38kDa

Calculated MW:

35kDa/38kDa/51kDa

Applications:

WB IHC

Reactivity:

Human, Mouse

Antibody Information

Recommended dilutions:

WB 1:500 - 1:2000 IHC 1:50
- 1:100

Source:

Rabbit

Isotype:

IgG

Purification:

Affinity purification

Protein Background

Immunogen information

Gene ID:

132001

Uniprot

Q96BW9

Synonyms:

TAMM41; C3orf31; RAM41; TAM41

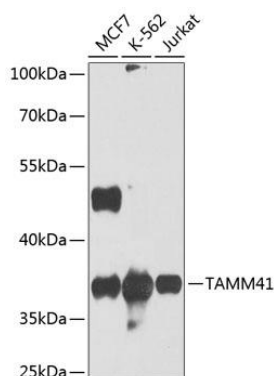
Immunogen:

Recombinant fusion protein containing a sequence corresponding to amino acids 25-316 of human TAMM41 (NP_620162.1).

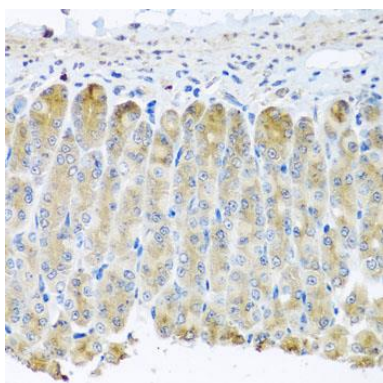
Storage:

Store at -20°C. Avoid freeze / thaw cycles. Buffer: PBS with 0.02% sodium azide, 50% glycerol, pH7.3.

Product Images



Western blot analysis of extracts of various cell lines, using TAMM41 antibody (CAB8374) at 1:1000 dilution. Secondary antibody: HRP Goat Anti-Rabbit IgG (H+L) (CABS014) at 1:10000 dilution. Lysates/proteins: 25ug per lane. Blocking buffer: 3% nonfat dry milk in TBST. Detection: ECL Basic Kit (CABM00020). Exposure time: 10s.



Immunohistochemistry of paraffin-embedded mouse stomach using TAMM41 antibody (CAB8374) at dilution of 1:100 (40x lens).