

TMEM189 Rabbit Polyclonal Antibody



CAB8380

Product Information

Size:

20uL, 50uL, 100uL, 200uL

Observed MW:

31kDa

Calculated MW:

30kDa/31kDa

Applications:

WB IHC

Reactivity:

Human

Protein Background

Co-transcription of this gene and the neighboring downstream gene (ubiquitin-conjugating enzyme E2 variant 1) generates a rare read-through transcript, which encodes a fusion protein comprised of sequence sharing identity with each individual gene product. The protein encoded by this individual gene lacks a UEV1 domain but includes three transmembrane regions. Alternative splicing results in multiple transcript variants.

Immunogen information

Gene ID:

387521

Uniprot

A5PLL7

Synonyms:

TMEM189; KUA

Antibody Information

Recommended dilutions:

WB 1:500 - 1:2000 IHC 1:50
- 1:100

Source:

Rabbit

Isotype:

IgG

Purification:

Affinity purification

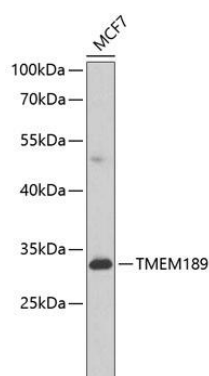
Immunogen:

A synthetic peptide corresponding to a sequence within amino acids 200 to the C-terminus of human TMEM189 (NP_954580.1).

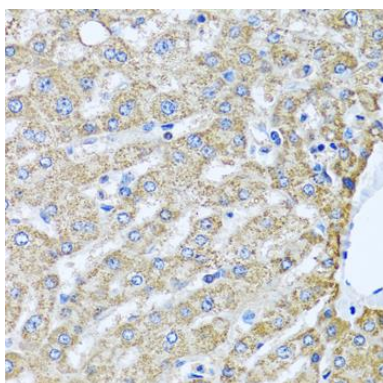
Storage:

Store at -20°C. Avoid freeze / thaw cycles. Buffer: PBS with 0.02% sodium azide, 50% glycerol, pH7.3.

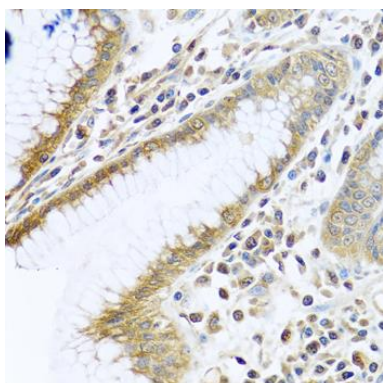
Product Images



Western blot analysis of extracts of MCF-7 cells, using TMEM189 antibody (CAB8380) at 1:1000 dilution. Secondary antibody: HRP Goat Anti-Rabbit IgG (H+L) (CABS014) at 1:10000 dilution. Lysates/proteins: 25ug per lane. Blocking buffer: 3% nonfat dry milk in TBST. Detection: ECL Basic Kit (CABM00020). Exposure time: 90s.



Immunohistochemistry of paraffin-embedded human liver using TMEM189 antibody (CAB8380) at dilution of 1:100 (40x lens).



Immunohistochemistry of paraffin-embedded human stomach using TMEM189 antibody (CAB8380) at dilution of 1:100 (40x lens).