

# TUBB8 Rabbit Polyclonal Antibody



CAB8396

---

## Product Information

### Size:

20uL, 50uL, 100uL, 200uL

### Observed MW:

50kDa

### Calculated MW:

49kDa

### Applications:

WB IHC IF

### Reactivity:

Human, Mouse, Rat

## Protein Background

The protein encoded by this gene represents the primary beta-tubulin subunit of oocytes and the early embryo. Defects in this gene, which is primate-specific, are a cause of oocyte maturation defect 2 and infertility.

## Immunogen information

### Gene ID:

347688

### Uniprot

Q3ZCM7

### Synonyms:

TUBB8; OOMD; OOMD2; bA631M21.2

## Antibody Information

### Recommended dilutions:

WB 1:500 - 1:2000 IHC 1:50  
- 1:100 IF 1:50 - 1:200

### Source:

Rabbit

### Isotype:

IgG

### Purification:

Affinity purification

### Immunogen:

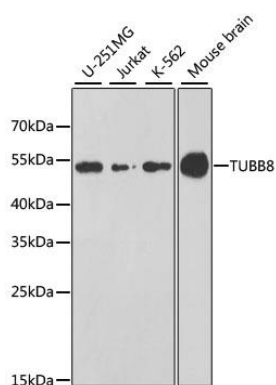
Recombinant fusion protein containing a sequence corresponding to amino acids 140-444 of human TUBB8 (NP\_817124.1).

### Storage:

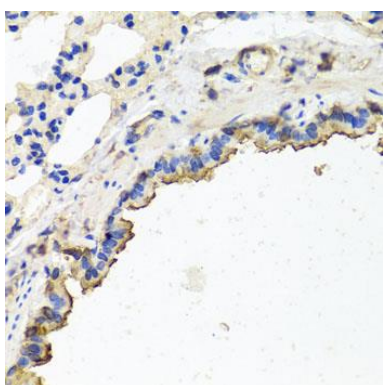
Store at -20°C. Avoid freeze / thaw cycles. Buffer: PBS with 0.02% sodium azide, 50% glycerol, pH7.3.

## Product Images

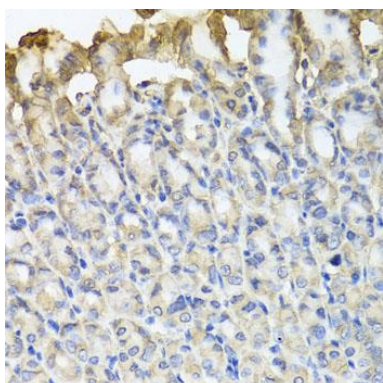
---



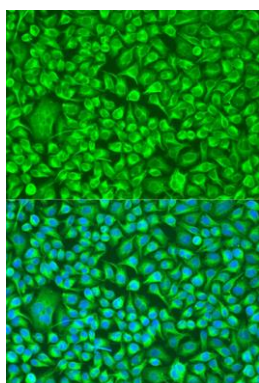
Western blot analysis of extracts of various cell lines, using TUBB8 antibody (CAB8396) at 1:1000 dilution. Secondary antibody: HRP Goat Anti-Rabbit IgG (H+L) (CABS014) at 1:10000 dilution. Lysates/proteins: 25ug per lane. Blocking buffer: 3% nonfat dry milk in TBST. Detection: ECL Enhanced Kit (CABM00021). Exposure time: 90s.



Immunohistochemistry of paraffin-embedded rat lung using TUBB8 antibody (CAB8396) at dilution of 1:100 (40x lens).



Immunohistochemistry of paraffin-embedded mouse stomach using TUBB8 antibody (CAB8396) at dilution of 1:100 (40x lens).



Immunofluorescence analysis of U2OS cells using TUBB8 antibody (CAB8396) at dilution of 1:100. Blue: DAPI for nuclear staining.