

ATP7A Rabbit Polyclonal Antibody



CAB8399

Product Information

Size:

20uL, 50uL, 100uL, 200uL

Observed MW:

163kDa

Calculated MW:

11kDa/54kDa/154kDa/163kDa/165kDa/172kDa

Applications:

WB IHC

Reactivity:

Human, Rat

Protein Background

This gene encodes a transmembrane protein that functions in copper transport across membranes. This protein is localized to the trans Golgi network, where it is predicted to supply copper to copper-dependent enzymes in the secretory pathway. It relocalizes to the plasma membrane under conditions of elevated extracellular copper, and functions in the efflux of copper from cells. Mutations in this gene are associated with Menkes disease, X-linked distal spinal muscular atrophy, and occipital horn syndrome. Alternatively-spliced transcript variants have been observed.

Immunogen information

Gene ID:

538

Uniprot

Q04656

Synonyms:

ATP7A; DSMAX; MK; MNK; SMAX3

Antibody Information

Recommended dilutions:

WB 1:500 - 1:2000 IHC 1:50 - 1:100

Source:

Rabbit

Isotype:

IgG

Purification:

Affinity purification

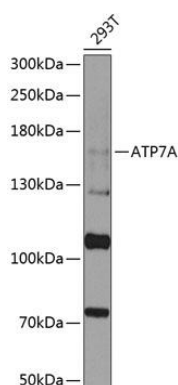
Immunogen:

Recombinant fusion protein containing a sequence corresponding to amino acids 1-170 of human ATP7A (NP_000043.4).

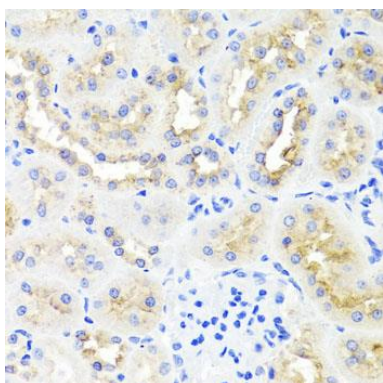
Storage:

Store at -20°C. Avoid freeze / thaw cycles. Buffer: PBS with 0.02% sodium azide, 50% glycerol, pH7.3.

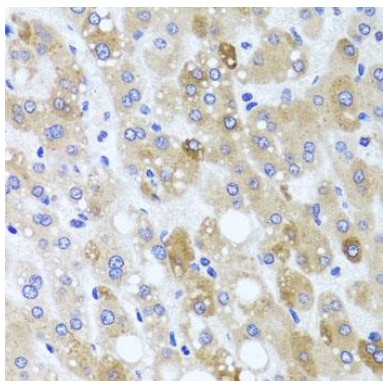
Product Images



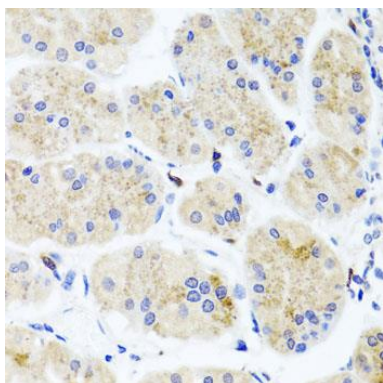
Western blot analysis of extracts of 293T cells, using ATP7A antibody (CAB8399) at 1:1000 dilution. Secondary antibody: HRP Goat Anti-Rabbit IgG (H+L) (CABS014) at 1:10000 dilution. Lysates/proteins: 25ug per lane. Blocking buffer: 3% nonfat dry milk in TBST. Detection: ECL Basic Kit (CABM00020). Exposure time: 90s.



Immunohistochemistry of paraffin-embedded rat kidney using ATP7A antibody (CAB8399) at dilution of 1:100 (40x lens).



Immunohistochemistry of paraffin-embedded human liver damage using ATP7A antibody (CAB8399) at dilution of 1:100 (40x lens).



Immunohistochemistry of paraffin-embedded human stomach using ATP7A antibody (CAB8399) at dilution of 1:100 (40x lens).