

# HNRNPL Rabbit Polyclonal Antibody



CAB8430

## Product Information

### Size:

20uL, 50uL, 100uL, 200uL

### Observed MW:

64kDa

### Calculated MW:

50kDa/64kDa

### Applications:

WB IHC IF

### Reactivity:

Human, Mouse, Rat

## Antibody Information

### Recommended dilutions:

WB 1:500 - 1:2000 IHC 1:50  
- 1:100 IF 1:50 - 1:100

### Source:

Rabbit

### Isotype:

IgG

### Purification:

Affinity purification

## Protein Background

Heterogeneous nuclear RNAs (hnRNAs) which include mRNA precursors and mature mRNAs are associated with specific proteins to form heterogeneous ribonucleoprotein (hnRNP) complexes. Heterogeneous nuclear ribonucleoprotein L is among the proteins that are stably associated with hnRNP complexes and along with other hnRNP proteins is likely to play a major role in the formation, packaging, processing, and function of mRNA. Heterogeneous nuclear ribonucleoprotein L is present in the nucleoplasm as part of the HNRNP complex. HNRNP proteins have also been identified outside of the nucleoplasm. Exchange of hnRNP for mRNA-binding proteins accompanies transport of mRNA from the nucleus to the cytoplasm. Since HNRNP proteins have been shown to shuttle between the nucleus and the cytoplasm, it is possible that they also have cytoplasmic functions. Two transcript variants encoding different isoforms have been found for this gene.

## Immunogen information

### Gene ID:

3191

### Uniprot

P14866

### Synonyms:

HNRNPL; HNRPL; P/OKcl.14; hnRNP-L

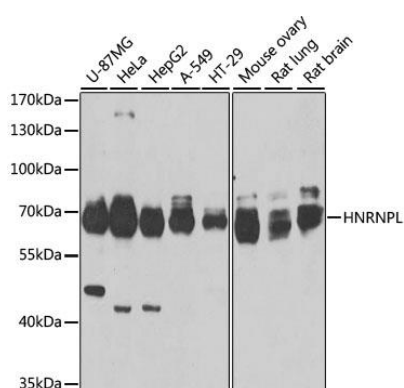
### Immunogen:

Recombinant fusion protein containing a sequence corresponding to amino acids 282-589 of human HNRNPL (NP\_001524.2).

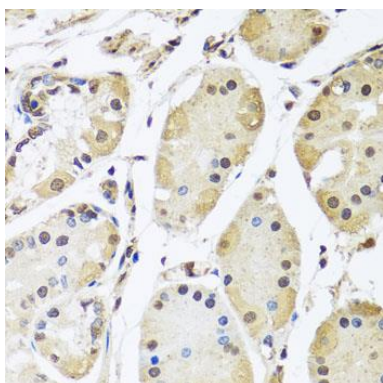
### Storage:

Store at -20°C. Avoid freeze / thaw cycles. Buffer: PBS with 0.02% sodium azide, 50% glycerol, pH7.3.

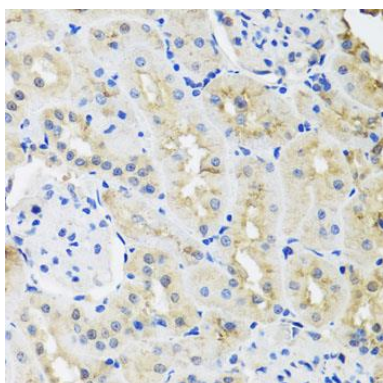
## Product Images



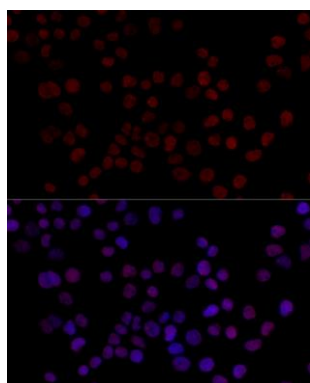
Western blot analysis of extracts of various cell lines, using HNRNPL antibody (CAB8430) at 1:1000 dilution. Secondary antibody: HRP Goat Anti-Rabbit IgG (H+L) (CABS014) at 1:10000 dilution. Lysates/proteins: 25ug per lane. Blocking buffer: 3% nonfat dry milk in TBST. Detection: ECL Enhanced Kit (CABM00021). Exposure time: 60s.



Immunohistochemistry of paraffin-embedded human stomach using HNRNPL antibody (CAB8430) at dilution of 1:100 (40x lens).



Immunohistochemistry of paraffin-embedded rat kidney using HNRNPL antibody (CAB8430) at dilution of 1:100 (40x lens).



Immunofluorescence analysis of 293T cells using HNRNPL antibody (CAB8430) at dilution of 1:100 (40x lens). Blue: DAPI for nuclear staining.