

HRG Rabbit Polyclonal Antibody



CAB8431

Product Information

Size:

20uL, 50uL, 100uL, 200uL

Observed MW:

80kDa

Calculated MW:

59kDa

Applications:

WB IHC

Reactivity:

Mouse, Rat

Antibody Information

Recommended dilutions:

WB 1:500 - 1:2000 IHC 1:50
- 1:100

Source:

Rabbit

Isotype:

IgG

Purification:

Affinity purification

Protein Background

This histidine-rich glycoprotein contains two cystatin-like domains and is located in plasma and platelets. The physiological function has not been determined but it is known that the protein binds heme, dyes and divalent metal ions. The encoded protein also has a peptide that displays antimicrobial activity against *C. albicans*, *E. coli*, *S. aureus*, *P. aeruginosa*, and *E. faecalis*. It can inhibit rosette formation and interacts with heparin, thrombospondin and plasminogen. Two of the protein's effects, the inhibition of fibrinolysis and the reduction of inhibition of coagulation, indicate a potential prothrombotic effect. Mutations in this gene lead to thrombophilia due to abnormal histidine-rich glycoprotein levels.

Immunogen information

Gene ID:

3273

Uniprot

P04196

Synonyms:

HRG; HPRG; HRGP; THPH11

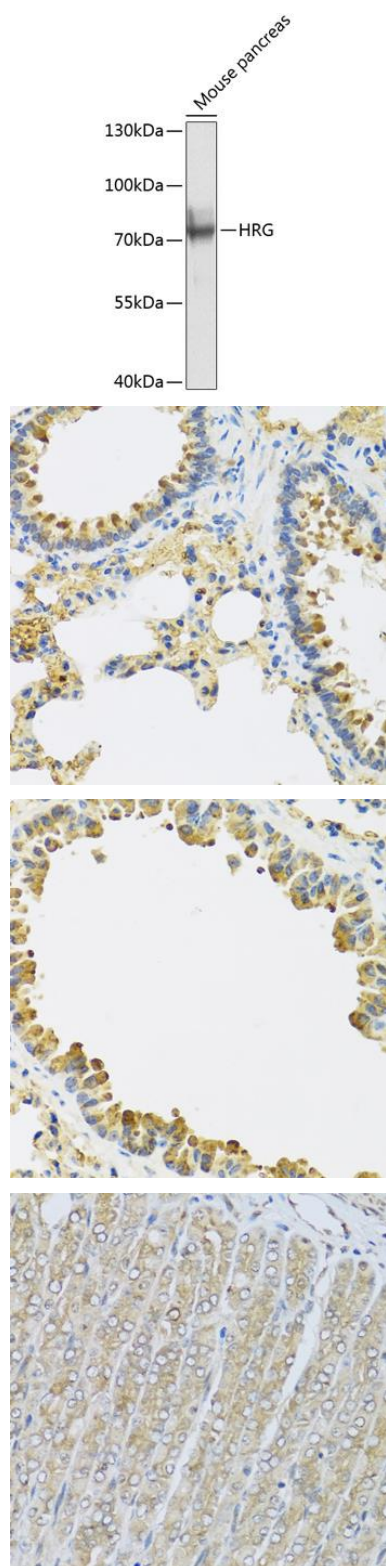
Immunogen:

Recombinant fusion protein containing a sequence corresponding to amino acids 20-260 of human HRG (NP_000403.1).

Storage:

Store at -20°C. Avoid freeze / thaw cycles. Buffer: PBS with 0.02% sodium azide, 50% glycerol, pH7.3.

Product Images



Western blot analysis of extracts of mouse pancreas, using HRG antibody (CAB8431) at 1:1000 dilution. Secondary antibody: HRP Goat Anti-Rabbit IgG (H+L) (CABS014) at 1:10000 dilution. Lysates/proteins: 25ug per lane. Blocking buffer: 3% nonfat dry milk in TBST. Detection: ECL Basic Kit (CABM00020). Exposure time: 1s.

Immunohistochemistry of paraffin-embedded rat lung using HRG antibody (CAB8431) at dilution of 1:100 (40x lens).

Immunohistochemistry of paraffin-embedded mouse lung using HRG antibody (CAB8431) at dilution of 1:100 (40x lens).

Immunohistochemistry of paraffin-embedded mouse stomach using HRG antibody (CAB8431) at dilution of 1:100 (40x lens).