

ITGB8 Rabbit Polyclonal Antibody



CAB8433

Product Information

Size:

20uL, 50uL, 100uL, 200uL

Observed MW:

100kDa

Calculated MW:

71kDa/85kDa

Applications:

WB IHC

Reactivity:

Human, Mouse, Rat

Antibody Information

Recommended dilutions:

WB 1:500 - 1:2000 IHC 1:50
- 1:200

Source:

Rabbit

Isotype:

IgG

Purification:

Affinity purification

Protein Background

This gene is a member of the integrin beta chain family and encodes a single-pass type I membrane protein with a VWFA domain and four cysteine-rich repeats. This protein noncovalently binds to an alpha subunit to form a heterodimeric integrin complex. In general, integrin complexes mediate cell-cell and cell-extracellular matrix interactions and this complex plays a role in human airway epithelial proliferation. Alternatively spliced variants which encode different protein isoforms have been described; however, not all variants have been fully characterized.

Immunogen information

Gene ID:

3696

Uniprot

P26012

Synonyms:

ITGB8

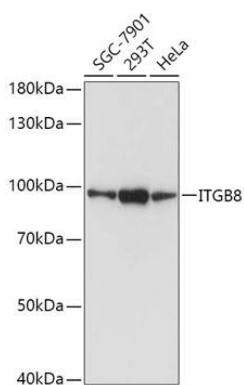
Immunogen:

Recombinant fusion protein containing a sequence corresponding to amino acids 43-320 of human ITGB8 (NP_002205.1).

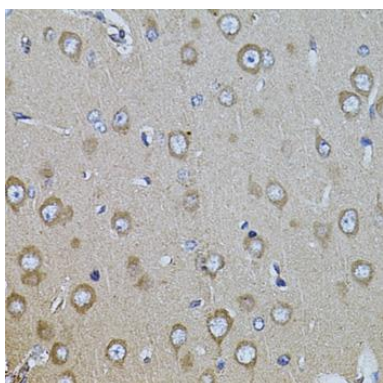
Storage:

Store at -20°C. Avoid freeze / thaw cycles. Buffer: PBS with 0.02% sodium azide, 50% glycerol, pH7.3.

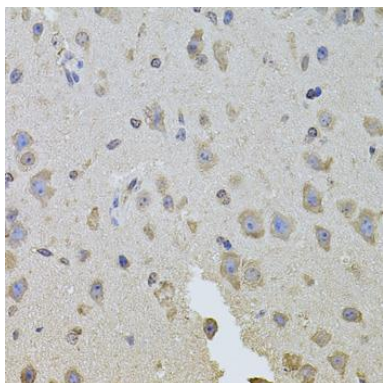
Product Images



Western blot analysis of extracts of various cell lines, using ITGB8 antibody (CAB8433) at 1:1000 dilution. Secondary antibody: HRP Goat Anti-Rabbit IgG (H+L) (CABS014) at 1:10000 dilution. Lysates/proteins: 25ug per lane. Blocking buffer: 3% nonfat dry milk in TBST. Detection: ECL Basic Kit (CABM00020). Exposure time: 5s.



Immunohistochemistry of paraffin-embedded rat brain using ITGB8 antibody (CAB8433) at dilution of 1:100 (40x lens).



Immunohistochemistry of paraffin-embedded mouse brain using ITGB8 antibody (CAB8433) at dilution of 1:100 (40x lens).