

MARK1 Rabbit Polyclonal Antibody



CAB8435

Product Information

Size:

20uL, 50uL, 100uL, 200uL

Observed MW:

95kDa

Calculated MW:

72kDa/84kDa/89kDa

Applications:

WB IHC

Reactivity:

Human, Mouse

Antibody Information

Recommended dilutions:

WB 1:500 - 1:2000 IHC 1:50
- 1:200

Source:

Rabbit

Isotype:

IgG

Purification:

Affinity purification

Protein Background

Immunogen information

Gene ID:

4139

Uniprot

Q9P0L2

Synonyms:

MARK1; MARK; Par-1c; Par1c

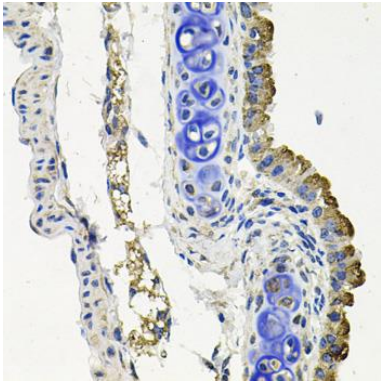
Immunogen:

Recombinant fusion protein containing a sequence corresponding to amino acids 560-700 of human MARK1 (NP_061120.3).

Storage:

Store at -20°C. Avoid freeze / thaw cycles. Buffer: PBS with 0.02% sodium azide, 50% glycerol, pH7.3.

Product Images



Immunohistochemistry of paraffin-embedded mouse lung using MARK1 antibody (CAB8435) at dilution of 1:100 (40x lens).