

# MYL1 Rabbit Polyclonal Antibody



CAB8438

---

## Product Information

### Size:

20uL, 50uL, 100uL, 200uL

### Observed MW:

27kDa

### Calculated MW:

16kDa/21kDa

### Applications:

WB IHC

### Reactivity:

Human, Mouse, Rat

## Protein Background

Myosin is a hexameric ATPase cellular motor protein. It is composed of two heavy chains, two nonphosphorylatable alkali light chains, and two phosphorylatable regulatory light chains. This gene encodes a myosin alkali light chain expressed in fast skeletal muscle. Two transcript variants have been identified for this gene.

## Immunogen information

### Gene ID:

4632

### Uniprot

P05976

### Synonyms:

MYL1; MLC1F; MLC3F

## Antibody Information

### Recommended dilutions:

WB 1:500 - 1:2000 IHC 1:50  
- 1:200

### Source:

Rabbit

### Isotype:

IgG

### Purification:

Affinity purification

### Immunogen:

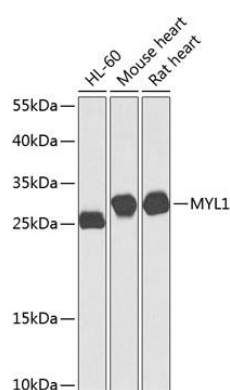
Recombinant fusion protein containing a sequence corresponding to amino acids 1-150 of human MYL1 (NP\_524146.1).

### Storage:

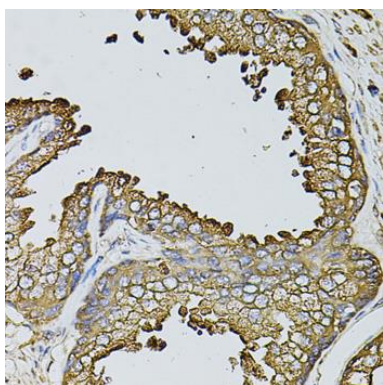
Store at -20°C. Avoid freeze / thaw cycles. Buffer: PBS with 0.02% sodium azide, 50% glycerol, pH7.3.

## Product Images

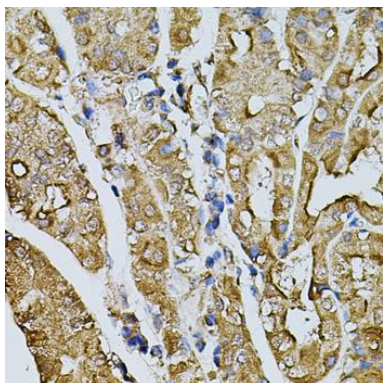
---



Western blot analysis of extracts of various cell lines, using MYL1 antibody (CAB8438) at 1:1000 dilution. Secondary antibody: HRP Goat Anti-Rabbit IgG (H+L) (CABS014) at 1:10000 dilution. Lysates/proteins: 25ug per lane. Blocking buffer: 3% nonfat dry milk in TBST. Detection: ECL Basic Kit (CABM00020). Exposure time: 60s.



Immunohistochemistry of paraffin-embedded human prostate using MYL1 antibody (CAB8438) at dilution of 1:100 (40x lens).



Immunohistochemistry of paraffin-embedded human stomach using MYL1 antibody (CAB8438) at dilution of 1:100 (40x lens).