

NEFH Rabbit Polyclonal Antibody



CAB8442

Product Information

Size:

20uL, 50uL, 100uL, 200uL

Observed MW:

240kDa

Calculated MW:

105kDa/112kDa

Applications:

WB IHC IF IP

Reactivity:

Human, Mouse, Rat

Protein Background

Neurofilaments are type IV intermediate filament heteropolymers composed of light, medium, and heavy chains. Neurofilaments comprise the axoskeleton and functionally maintain neuronal caliber. They may also play a role in intracellular transport to axons and dendrites. This gene encodes the heavy neurofilament protein. This protein is commonly used as a biomarker of neuronal damage and susceptibility to amyotrophic lateral sclerosis (ALS) has been associated with mutations in this gene.

Immunogen information

Gene ID:

4744

Uniprot

P12036

Synonyms:

CMT2CC; NFH; NEFH

Antibody Information

Recommended dilutions:

WB 1:500 - 1:2000 IHC 1:50
- 1:100 IF 1:50 - 1:100 IP
1:50 - 1:200

Source:

Rabbit

Isotype:

IgG

Purification:

Affinity purification

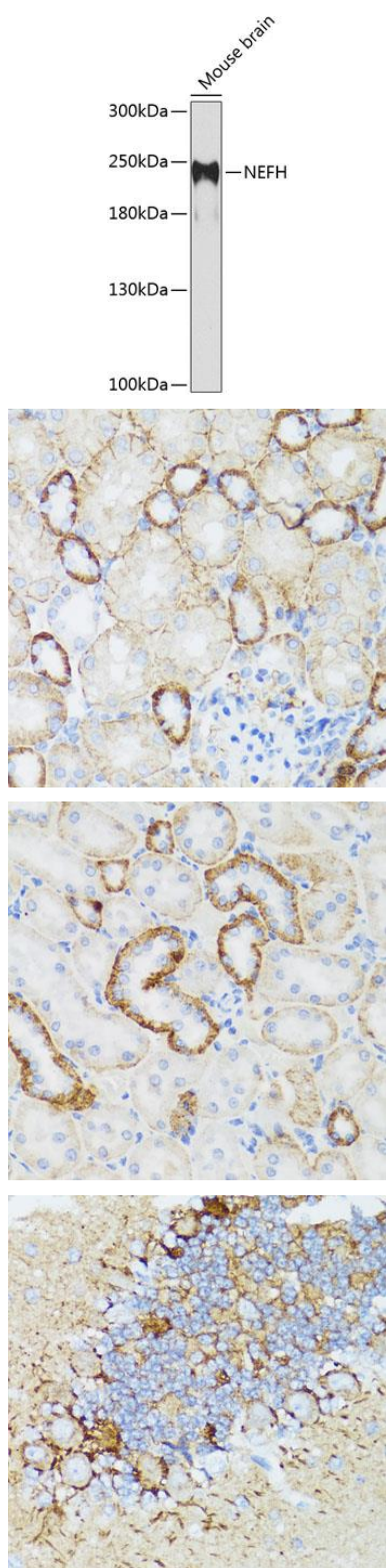
Immunogen:

Recombinant fusion protein containing a sequence corresponding to amino acids 821-1020 of human NEFH (NP_066554.2).

Storage:

Store at -20°C. Avoid freeze / thaw cycles. Buffer: PBS with 0.02% sodium azide, 50% glycerol, pH7.3.

Product Images



Western blot analysis of extracts of mouse brain, using NEFH antibody (CAB8442) at 1:1000 dilution. Secondary antibody: HRP Goat Anti-Rabbit IgG (H+L) (CABS014) at 1:10000 dilution. Lysates/proteins: 25ug per lane. Blocking buffer: 3% nonfat dry milk in TBST. Detection: ECL Enhanced Kit (CABM00021). Exposure time: 60s.

Immunohistochemistry of paraffin-embedded mouse kidney using NEFH antibody (CAB8442) at dilution of 1:100 (40x lens).

Immunohistochemistry of paraffin-embedded rat kidney using NEFH antibody (CAB8442) at dilution of 1:100 (40x lens).

Immunohistochemistry of paraffin-embedded rat cerebellum using NEFH antibody (CAB8442) at dilution of 1:100 (40x lens).