

PCK2 Rabbit Polyclonal Antibody



CAB8446

Product Information

Size:

20uL, 50uL, 100uL, 200uL

Observed MW:

71kDa

Calculated MW:

47kDa/70kDa

Applications:

WB IHC IF IP

Reactivity:

Human, Mouse, Rat

Protein Background

This gene encodes a mitochondrial enzyme that catalyzes the conversion of oxaloacetate to phosphoenolpyruvate in the presence of guanosine triphosphate (GTP). A cytosolic form of this protein is encoded by a different gene and is the key enzyme of gluconeogenesis in the liver. Alternatively spliced transcript variants have been described.

Immunogen information

Gene ID:

5106

Uniprot

Q16822

Synonyms:

PCK2; PEPCK; PEPCK-M; PEPCK2

Antibody Information

Recommended dilutions:

WB 1:500 - 1:2000 IHC 1:50
- 1:100 IF 1:50 - 1:200 IP
1:20 - 1:100

Source:

Rabbit

Isotype:

IgG

Purification:

Affinity purification

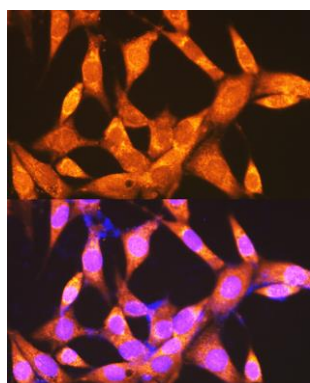
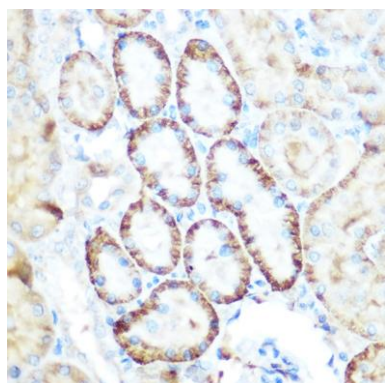
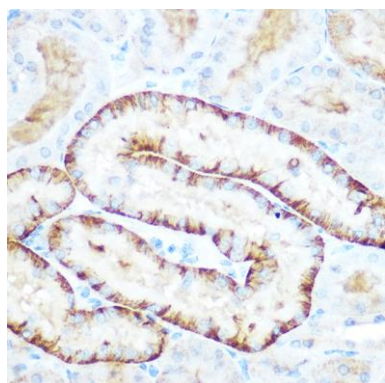
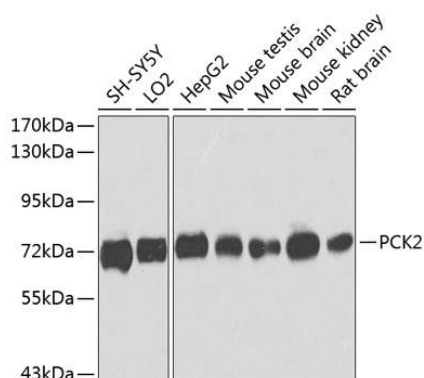
Immunogen:

Recombinant fusion protein containing a sequence corresponding to amino acids 1-280 of human PCK2 (NP_004554.2).

Storage:

Store at -20°C. Avoid freeze / thaw cycles. Buffer: PBS with 0.02% sodium azide, 50% glycerol, pH7.3.

Product Images



Western blot analysis of extracts of various cell lines, using PCK2 antibody (CAB8446) at 1:1000 dilution. Secondary antibody: HRP Goat Anti-Rabbit IgG (H+L) (CABS014) at 1:10000 dilution. Lysates/proteins: 25ug per lane. Blocking buffer: 3% nonfat dry milk in TBST. Detection: ECL Enhanced Kit (CABM00021). Exposure time: 10s.

Immunohistochemistry of paraffin-embedded mouse kidney using PCK2 Rabbit pAb (CAB8446) at dilution of 1:100 (40x lens).

Immunohistochemistry of paraffin-embedded rat kidney using PCK2 Rabbit pAb (CAB8446) at dilution of 1:100 (40x lens).

Immunofluorescence analysis of NIH-3T3 cells using PCK2 Rabbit pAb (CAB8446) at dilution of 1:100 (40x lens). Blue: DAPI for nuclear staining.