

PER1 Rabbit Polyclonal Antibody



CAB8449

Product Information

Size:

20uL, 50uL, 100uL, 200uL

Observed MW:

160kDa

Calculated MW:

91kDa/136kDa

Applications:

WB IHC IF

Reactivity:

Human, Mouse, Rat

Antibody Information

Recommended dilutions:

WB 1:500 - 1:2000 IHC 1:50
- 1:100 IF 1:50 - 1:200

Source:

Rabbit

Isotype:

IgG

Purification:

Affinity purification

Protein Background

This gene is a member of the Period family of genes and is expressed in a circadian pattern in the suprachiasmatic nucleus, the primary circadian pacemaker in the mammalian brain. Genes in this family encode components of the circadian rhythms of locomotor activity, metabolism, and behavior. This gene is upregulated by CLOCK/ARNTL heterodimers but then represses this upregulation in a feedback loop using PER/CRY heterodimers to interact with CLOCK/ARNTL. Polymorphisms in this gene may increase the risk of getting certain cancers. Alternative splicing has been observed in this gene; however, these variants have not been fully described.

Immunogen information

Gene ID:

5187

Uniprot

O15534

Synonyms:

PER1; PER; RIGUI; hPER

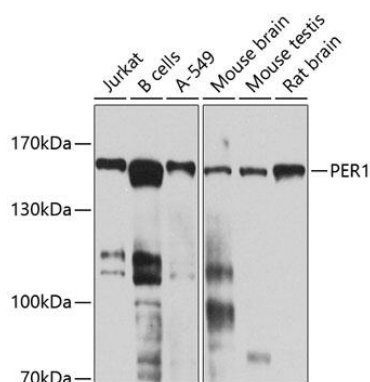
Immunogen:

Recombinant fusion protein containing a sequence corresponding to amino acids 1-200 of human PER1 (NP_002607.2).

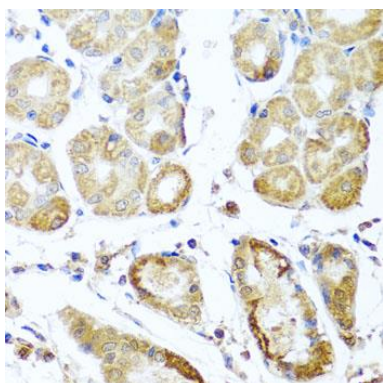
Storage:

Store at -20°C. Avoid freeze / thaw cycles. Buffer: PBS with 0.02% sodium azide, 50% glycerol, pH7.3.

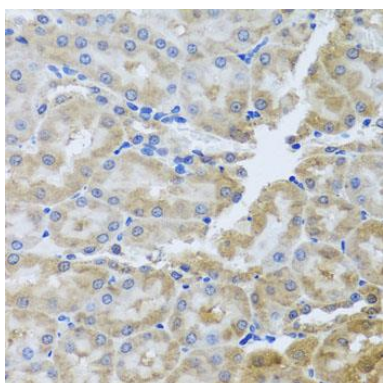
Product Images



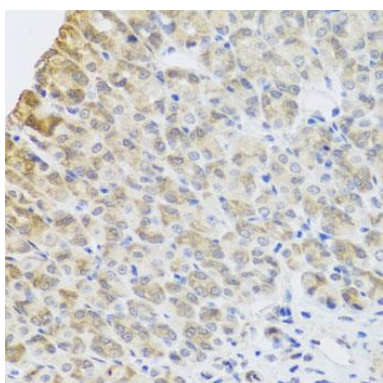
Western blot analysis of extracts of various cell lines, using PER1 antibody (CAB8449) at 1:1000 dilution. Secondary antibody: HRP Goat Anti-Rabbit IgG (H+L) (CABS014) at 1:10000 dilution. Lysates/proteins: 25ug per lane. Blocking buffer: 3% nonfat dry milk in TBST. Detection: ECL Enhanced Kit (CABM00021). Exposure time: 90s.



Immunohistochemistry of paraffin-embedded human stomach using PER1 antibody (CAB8449) at dilution of 1:100 (40x lens).



Immunohistochemistry of paraffin-embedded rat kidney using PER1 antibody (CAB8449) at dilution of 1:100 (40x lens).



Immunohistochemistry of paraffin-embedded mouse stomach using PER1 antibody (CAB8449) at dilution of 1:100 (40x lens).