

[KO Validated] HIRA Rabbit Polyclonal Antibody



CAB8461

Product Information

Size:

20uL, 50uL, 100uL, 200uL

Observed MW:

112kDa

Calculated MW:

89kDa/111kDa

Applications:

WB IHC

Reactivity:

Human

Protein Background

This gene encodes a histone chaperone that preferentially places the variant histone H3.3 in nucleosomes. Orthologs of this gene in yeast, flies, and plants are necessary for the formation of transcriptionally silent heterochromatin. This gene plays an important role in the formation of the senescence-associated heterochromatin foci. These foci likely mediate the irreversible cell cycle changes that occur in senescent cells. It is considered the primary candidate gene in some haploinsufficiency syndromes such as DiGeorge syndrome, and insufficient production of the gene may disrupt normal embryonic development.

Immunogen information

Gene ID:

7290

Uniprot

P54198

Synonyms:

HIRA; DGCR1; TUP1; TUPLE1

Antibody Information

Recommended dilutions:

WB 1:500 - 1:2000 IHC

1:100 - 1:200

Source:

Rabbit

Isotype:

IgG

Purification:

Affinity purification

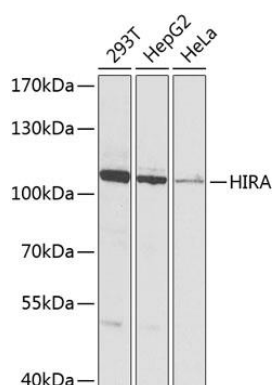
Immunogen:

Recombinant fusion protein containing a sequence corresponding to amino acids 250-550 of human HIRA (NP_003316.3).

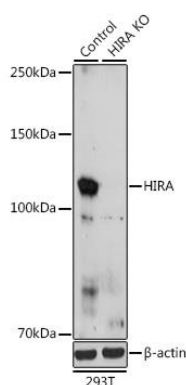
Storage:

Store at -20°C. Avoid freeze / thaw cycles. Buffer: PBS with 0.02% sodium azide, 50% glycerol, pH7.3.

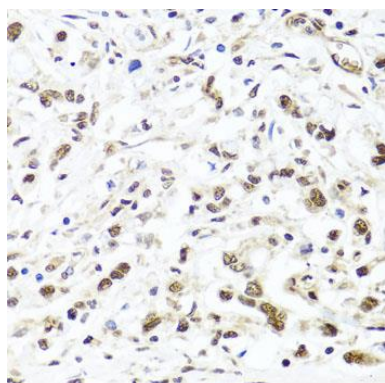
Product Images



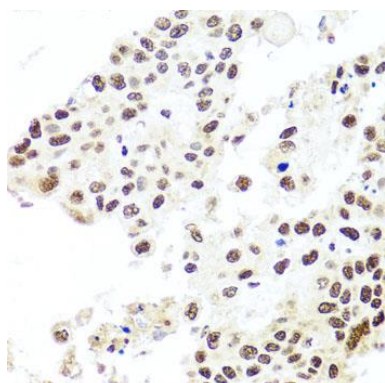
Western blot analysis of extracts of various cell lines, using HIRA antibody (CAB8461) at 1:1000 dilution. Secondary antibody: HRP Goat Anti-Rabbit IgG (H+L) (CABS014) at 1:10000 dilution. Lysates/proteins: 25ug per lane. Blocking buffer: 3% nonfat dry milk in TBST. Detection: ECL Basic Kit (CABM00020). Exposure time: 10s.



Western blot analysis of extracts from normal (control) and HIRA Rabbit pAb knockout (KO) 293T cells, using HIRA Rabbit pAb antibody (CAB8461) at 1:1000 dilution. Secondary antibody: HRP Goat Anti-Rabbit IgG (H+L) (CABS014) at 1:10000 dilution. Lysates/proteins: 25ug per lane. Blocking buffer: 3% nonfat dry milk in TBST. Detection: ECL Basic Kit (CABM00020). Exposure time: 180s.



Immunohistochemistry of paraffin-embedded human gastric cancer using HIRA antibody (CAB8461) at dilution of 1:100 (40x lens).



Immunohistochemistry of paraffin-embedded human lung cancer using HIRA antibody (CAB8461) at dilution of 1:100 (40x lens).