

TAF15 Rabbit Polyclonal Antibody



CAB8465

Product Information

Size:

20uL, 50uL, 100uL, 200uL

Observed MW:

80kDa

Calculated MW:

61kDa

Applications:

WB IHC IP

Reactivity:

Human

Protein Background

This gene encodes a member of the TET family of RNA-binding proteins. The encoded protein plays a role in RNA polymerase II gene transcription as a component of a distinct subset of multi-subunit transcription initiation factor TFIID complexes. Translocations involving this gene play a role in acute leukemia and extraskelatal myxoid chondrosarcoma, and mutations in this gene may play a role in amyotrophic lateral sclerosis. Alternatively spliced transcript variants encoding multiple isoforms have been observed for this gene.

Immunogen information

Gene ID:

8148

Uniprot

Q92804

Synonyms:

TAF15; Npl3; RBP56; TAF2N; TAFII68

Antibody Information

Recommended dilutions:

WB 1:500 - 1:2000 IHC 1:50
- 1:100 IP 1:50 - 1:200

Source:

Rabbit

Isotype:

IgG

Purification:

Affinity purification

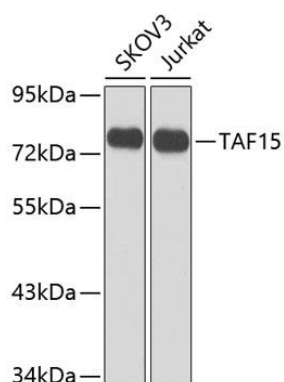
Immunogen:

Recombinant fusion protein containing a sequence corresponding to amino acids 1-280 of human TAF15 (NP_631961.1).

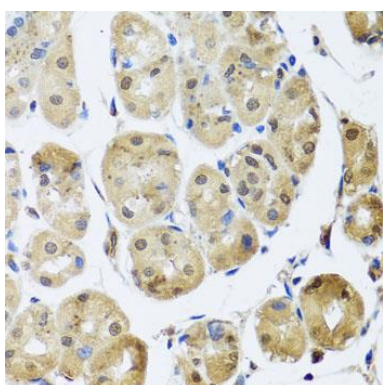
Storage:

Store at -20°C. Avoid freeze / thaw cycles. Buffer: PBS with 0.02% sodium azide, 50% glycerol, pH7.3.

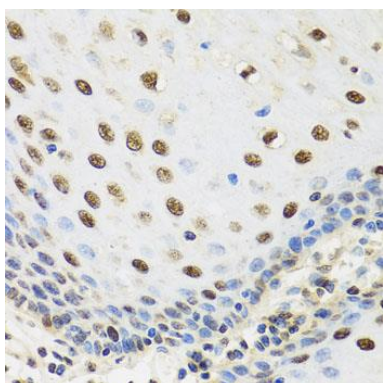
Product Images



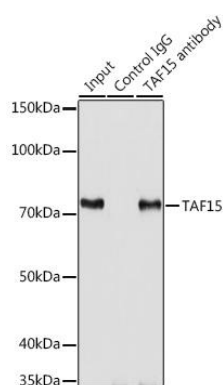
Western blot analysis of extracts of various cell lines, using TAF15 antibody (CAB8465) at 1:1000 dilution. Secondary antibody: HRP Goat Anti-Rabbit IgG (H+L) (CABS014) at 1:10000 dilution. Lysates/proteins: 25ug per lane. Blocking buffer: 3% nonfat dry milk in TBST. Detection: ECL Enhanced Kit (CABM00021). Exposure time: 5s.



Immunohistochemistry of paraffin-embedded human stomach using TAF15 antibody (CAB8465) at dilution of 1:100 (40x lens).



Immunohistochemistry of paraffin-embedded human esophagus using TAF15 antibody (CAB8465) at dilution of 1:100 (40x lens).



Immunoprecipitation analysis of 200ug extracts of SKOV3 cells using 3ug TAF15 antibody (CAB8465). Western blot was performed from the immunoprecipitate using TAF15 antibody (CAB8465) at a dilution of 1:1000.