

RIPK4 Rabbit Polyclonal Antibody



CAB8495

Product Information

Size:

20uL, 50uL, 100uL, 200uL

Observed MW:

92KDa

Calculated MW:

86kDa/91kDa

Applications:

WB IHC

Reactivity:

Human, Mouse

Protein Background

The protein encoded by this gene is a serine/threonine protein kinase that interacts with protein kinase C-delta. The encoded protein can also activate NFkappaB and is required for keratinocyte differentiation. This kinase undergoes autophosphorylation.

Immunogen information

Gene ID:

54101

Uniprot

P57078

Synonyms:

RIPK4; ANKK2; ANKRD3; DIK; NKRD3; PKK; PPS2; RIP4

Antibody Information

Recommended dilutions:

WB 1:500 - 1:2000 IHC

1:100 - 1:200

Source:

Rabbit

Isotype:

IgG

Purification:

Affinity purification

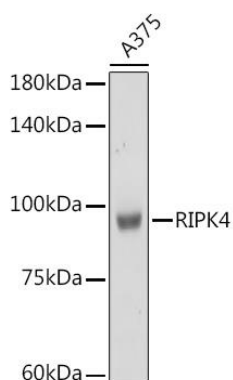
Immunogen:

Recombinant fusion protein containing a sequence corresponding to amino acids 240-520 of human RIPK4 (NP_065690.2).

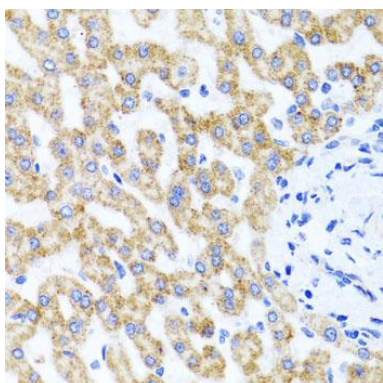
Storage:

Store at -20°C. Avoid freeze / thaw cycles. Buffer: PBS with 0.02% sodium azide, 50% glycerol, pH7.3.

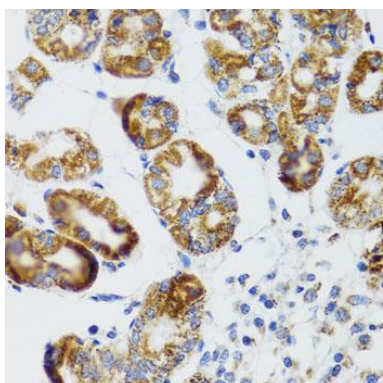
Product Images



Western blot analysis of extracts of A375 cells, using RIPK4 Rabbit pAb (CAB8495) at 1:1000 dilution. Secondary antibody: HRP Goat Anti-Rabbit IgG (H+L) (CABS014) at 1:10000 dilution. Lysates/proteins: 25ug per lane. Blocking buffer: 3% nonfat dry milk in TBST. Detection: ECL Basic Kit (CABM00020). Exposure time: 30s.



Immunohistochemistry of paraffin-embedded human liver damage using RIPK4 antibody (CAB8495) at dilution of 1:100 (40x lens).



Immunohistochemistry of paraffin-embedded human stomach using RIPK4 antibody (CAB8495) at dilution of 1:100 (40x lens).