

FAM20A Rabbit Polyclonal Antibody



CAB8496

Product Information

Size:

20uL, 50uL, 100uL, 200uL

Observed MW:

54kDa

Calculated MW:

61kDa

Applications:

WB IHC

Reactivity:

Human, Mouse, Rat

Protein Background

This locus encodes a protein that is likely secreted and may function in hematopoiesis. A mutation at this locus has been associated with amelogenesis imperfecta and gingival hyperplasia syndrome. Alternatively spliced transcript variants have been identified.

Immunogen information

Gene ID:

54757

Uniprot

Q96MK3

Synonyms:

FAM20A; A11G; AIGFS; FP2747

Antibody Information

Recommended dilutions:

WB 1:500 - 1:2000 IHC

1:100 - 1:200

Source:

Rabbit

Isotype:

IgG

Purification:

Affinity purification

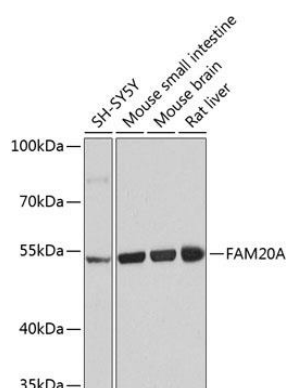
Immunogen:

Recombinant fusion protein containing a sequence corresponding to amino acids 140-240 of human FAM20A (NP_060035.2).

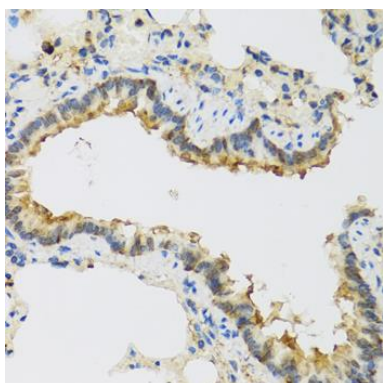
Storage:

Store at -20°C. Avoid freeze / thaw cycles. Buffer: PBS with 0.02% sodium azide, 50% glycerol, pH7.3.

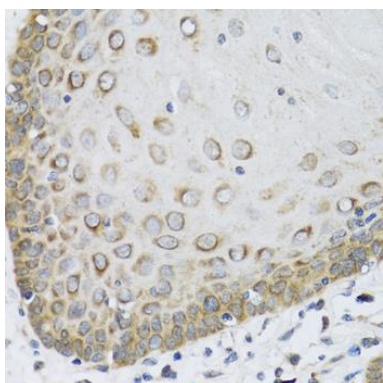
Product Images



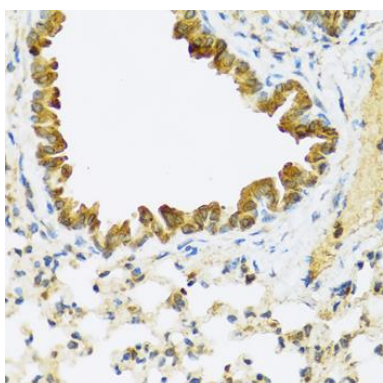
Western blot analysis of extracts of various cell lines, using FAM20A antibody (CAB8496) at 1:1000 dilution. Secondary antibody: HRP Goat Anti-Rabbit IgG (H+L) (CABS014) at 1:10000 dilution. Lysates/proteins: 25ug per lane. Blocking buffer: 3% nonfat dry milk in TBST. Detection: ECL Basic Kit (CABM00020). Exposure time: 5s.



Immunohistochemistry of paraffin-embedded rat lung using FAM20A antibody (CAB8496) at dilution of 1:100 (40x lens).



Immunohistochemistry of paraffin-embedded human esophagus using FAM20A antibody (CAB8496) at dilution of 1:100 (40x lens).



Immunohistochemistry of paraffin-embedded mouse lung using FAM20A antibody (CAB8496) at dilution of 1:100 (40x lens).