

SMEK1 Rabbit Polyclonal Antibody



CAB8500

Product Information

Size:

20uL, 50uL, 100uL, 200uL

Observed MW:

110kDa

Calculated MW:

62kDa/67kDa/93kDa/95kDa

Applications:

WB IHC IF

Reactivity:

Human, Mouse, Rat

Antibody Information

Recommended dilutions:

WB 1:500 - 1:2000 IHC 1:50
- 1:100 IF 1:50 - 1:200

Source:

Rabbit

Isotype:

IgG

Purification:

Affinity purification

Protein Background

Immunogen information

Gene ID:

55671

Uniprot

Q6IN85

Synonyms:

PPP4R3A; FLFL1; KIAA2010; MSTP033; PP4R3; PP4R3A; SMEK1;
smk-1; smk1

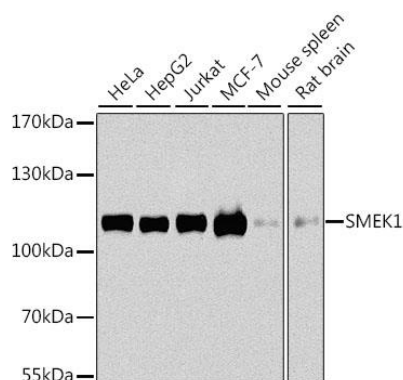
Immunogen:

Recombinant fusion protein containing a sequence corresponding to amino acids 395-594 of human SMEK1 (NP_001271210.1).

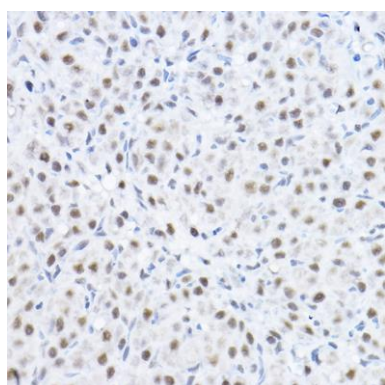
Storage:

Store at -20°C. Avoid freeze / thaw cycles. Buffer: PBS with 0.02% sodium azide, 50% glycerol, pH7.3.

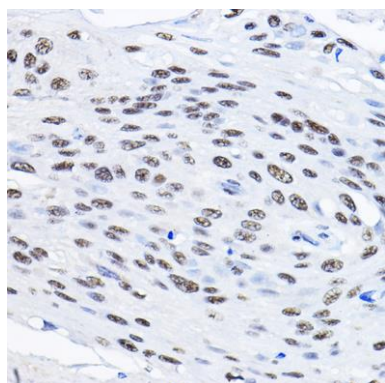
Product Images



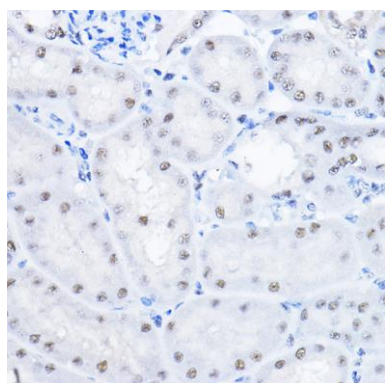
Western blot analysis of extracts of various cell lines, using SMEK1 antibody (CAB8500) at 1:1000 dilution. Secondary antibody: HRP Goat Anti-Rabbit IgG (H+L) (CABS014) at 1:10000 dilution. Lysates/proteins: 25ug per lane. Blocking buffer: 3% nonfat dry milk in TBST. Detection: ECL Basic Kit (CABM00020). Exposure time: 10s.



Immunohistochemistry of paraffin-embedded rat ovary using SMEK1 Rabbit pAb (CAB8500) at dilution of 1:100 (40x lens).



Immunohistochemistry of paraffin-embedded human esophageal cancer using SMEK1 Rabbit pAb (CAB8500) at dilution of 1:100 (40x lens).



Immunohistochemistry of paraffin-embedded mouse kidney using SMEK1 Rabbit pAb (CAB8500) at dilution of 1:100 (40x lens).