

MKL1 Rabbit Polyclonal Antibody



CAB8504

Product Information

Size:

20uL, 50uL, 100uL, 200uL

Observed MW:

145kDa

Calculated MW:

98kDa

Applications:

WB IHC IF IP

Reactivity:

Human, Mouse, Rat

Protein Background

The protein encoded by this gene interacts with the transcription factor myocardin, a key regulator of smooth muscle cell differentiation. The encoded protein is predominantly nuclear and may help transduce signals from the cytoskeleton to the nucleus. This gene is involved in a specific translocation event that creates a fusion of this gene and the RNA-binding motif protein-15 gene. This translocation has been associated with acute megakaryocytic leukemia. Alternative splicing results in multiple transcript variants.

Immunogen information

Gene ID:

57591

Uniprot

Q969V6

Synonyms:

MKL1; BSAC; MAL; MRTF-A

Antibody Information

Recommended dilutions:

WB 1:500 - 1:2000 IHC 1:50
- 1:200 IF 1:50 - 1:200 IP
1:20 - 1:50

Source:

Rabbit

Isotype:

IgG

Purification:

Affinity purification

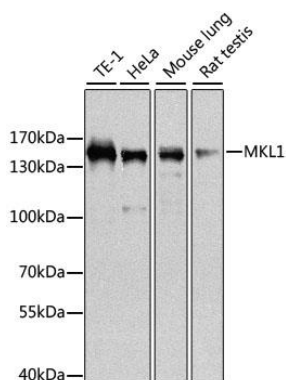
Immunogen:

Recombinant fusion protein containing a sequence corresponding to amino acids 1-280 of human MKL1 (NP_065882.1).

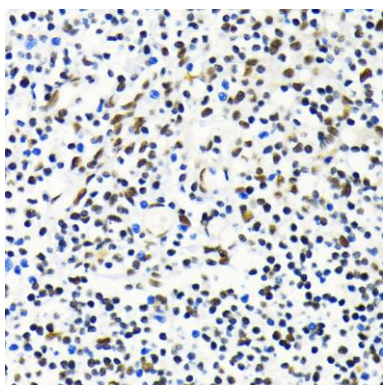
Storage:

Store at -20°C. Avoid freeze / thaw cycles. Buffer: PBS with 0.02% sodium azide, 50% glycerol, pH7.3.

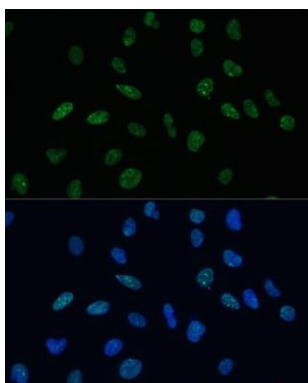
Product Images



Western blot analysis of extracts of various cell lines, using MKL1 antibody (CAB8504) at 1:1000 dilution. Secondary antibody: HRP Goat Anti-Rabbit IgG (H+L) (CABS014) at 1:10000 dilution. Lysates/proteins: 25ug per lane. Blocking buffer: 3% nonfat dry milk in TBST. Detection: ECL Basic Kit (CABM00020). Exposure time: 10s.



Immunohistochemistry of paraffin-embedded human tonsil using MKL1 antibody (CAB8504) at dilution of 1:100 (40x lens).



Immunofluorescence analysis of U-2 OS cells using MKL1 Polyclonal Antibody (CAB8504) at dilution of 1:100 (40x lens). Blue: DAPI for nuclear staining.