

PPP4R4 Rabbit Polyclonal Antibody



CAB8505

Product Information

Size:

20uL, 50uL, 100uL, 200uL

Observed MW:

99kDa

Calculated MW:

13kDa/99kDa

Applications:

WB

Reactivity:

Mouse

Antibody Information

Recommended dilutions:

WB 1:500 - 1:2000

Source:

Rabbit

Isotype:

IgG

Purification:

Affinity purification

Protein Background

The protein encoded by this gene is a HEAT-like repeat-containing protein. The HEAT repeat is a tandemly repeated, 37-47 amino acid long module occurring in a number of cytoplasmic proteins. Arrays of HEAT repeats form a rod-like helical structure and appear to function as protein-protein interaction surfaces. The repeat-containing region of this protein has some similarity to the constant regulatory domain of the protein phosphatase 2A PR65/A subunit. The encoded protein binds protein serine/threonine phosphatase 4c in the cytoplasm.

Immunogen information

Gene ID:

57718

Uniprot

Q6NUP7

Synonyms:

PPP4R4; CFAP14; KIAA1622; PP4R4

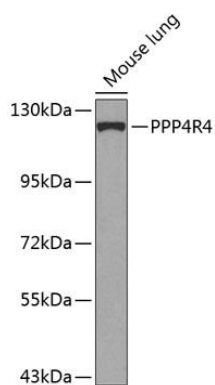
Immunogen:

Recombinant fusion protein containing a sequence corresponding to amino acids 620-830 of human PPP4R4 (NP_478144.1).

Storage:

Store at -20°C. Avoid freeze / thaw cycles. Buffer: PBS with 0.02% sodium azide, 50% glycerol, pH7.3.

Product Images



Western blot analysis of extracts of mouse lung, using PPP4R4 antibody (CAB8505) at 1:1000 dilution. Secondary antibody: HRP Goat Anti-Rabbit IgG (H+L) (CABS014) at 1:10000 dilution. Lysates/proteins: 25ug per lane. Blocking buffer: 3% nonfat dry milk in TBST. Detection: ECL Basic Kit (CABM00020). Exposure time: 30s.