

# ZNF408 Rabbit Polyclonal Antibody



CAB8512

---

## Product Information

### Size:

20uL, 50uL, 100uL, 200uL

### Observed MW:

78kDa

### Calculated MW:

78kDa

### Applications:

WB IHC

### Reactivity:

Human, Mouse, Rat

## Protein Background

The protein encoded by this gene contains ten tandem zinc fingers and an N-terminal SET domain, so it is likely a DNA binding protein that interacts with other proteins. In adults, the encoded protein is expressed most highly in retina. Consequently, defects in this gene have been associated with familial exudative vitreoretinopathy (FEVR) and retinitis pigmentosa (RP).

## Immunogen information

### Gene ID:

79797

### Uniprot

Q9H9D4

### Synonyms:

ZNF408; EVR6; RP72

## Antibody Information

### Recommended dilutions:

WB 1:500 - 1:2000 IHC 1:50  
- 1:200

### Source:

Rabbit

### Isotype:

IgG

### Purification:

Affinity purification

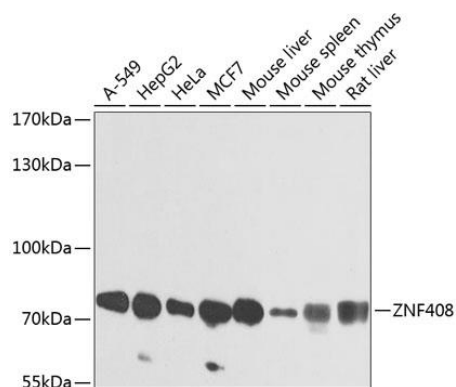
### Immunogen:

Recombinant fusion protein containing a sequence corresponding to amino acids 471-720 of human ZNF408 (NP\_079017.1).

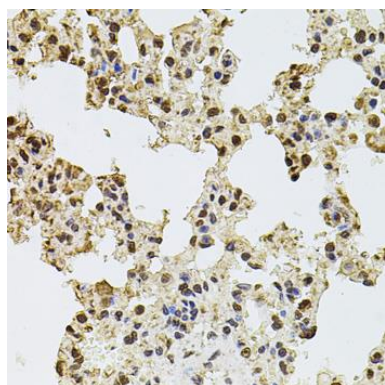
### Storage:

Store at -20°C. Avoid freeze / thaw cycles. Buffer: PBS with 0.02% sodium azide, 50% glycerol, pH7.3.

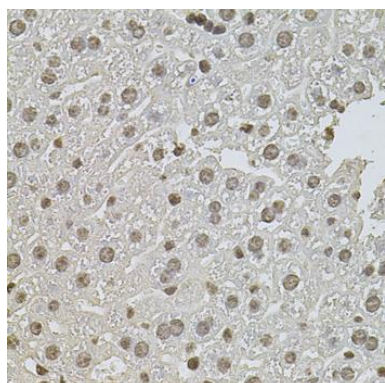
## Product Images



Western blot analysis of extracts of various cell lines, using ZNF408 antibody (CAB8512) at 1:1000 dilution. Secondary antibody: HRP Goat Anti-Rabbit IgG (H+L) (CABS014) at 1:10000 dilution. Lysates/proteins: 25ug per lane. Blocking buffer: 3% nonfat dry milk in TBST. Detection: ECL Enhanced Kit (CABM00021). Exposure time: 1s.



Immunohistochemistry of paraffin-embedded rat lung using ZNF408 antibody (CAB8512) at dilution of 1:100 (40x lens).



Immunohistochemistry of paraffin-embedded mouse liver using ZNF408 antibody (CAB8512) at dilution of 1:100 (40x lens).