

EHMT1 Rabbit Polyclonal Antibody



CAB8513

Product Information

Size:

20uL, 50uL, 100uL, 200uL

Observed MW:

141kDa

Calculated MW:

7kDa/86kDa/128kDa/141kDa

Applications:

WB

Reactivity:

Human, Mouse, Rat

Antibody Information

Recommended dilutions:

WB 1:500 - 1:2000

Source:

Rabbit

Isotype:

IgG

Purification:

Affinity purification

Protein Background

The protein encoded by this gene is a histone methyltransferase that is part of the E2F6 complex, which represses transcription. The encoded protein methylates the Lys-9 position of histone H3, which tags it for transcriptional repression. This protein may be involved in the silencing of MYC- and E2F-responsive genes and therefore could play a role in the G0/G1 cell cycle transition. Defects in this gene are a cause of chromosome 9q subtelomeric deletion syndrome (9q-syndrome, also known as Kleefstra syndrome). Alternative splicing results in multiple transcript variants.

Immunogen information

Gene ID:

79813

Uniprot

Q9H9B1

Synonyms:

EHMT1; EUHMTASE1; Eu-HMTase1; FP13812; GLP; GLP1; KMT1D; bA188C12.1

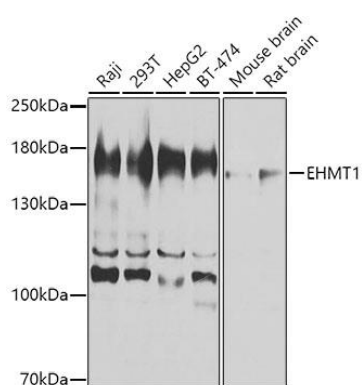
Immunogen:

Recombinant fusion protein containing a sequence corresponding to amino acids 1-260 of human EHMT1 (NP_079033.4).

Storage:

Store at -20°C. Avoid freeze / thaw cycles. Buffer: PBS with 0.02% sodium azide, 50% glycerol, pH7.3.

Product Images



Western blot analysis of extracts of various cell lines, using EHMT1 antibody (CAB8513) at 1:1000 dilution. Secondary antibody: HRP Goat Anti-Rabbit IgG (H+L) (CABS014) at 1:10000 dilution. Lysates/proteins: 25ug per lane. Blocking buffer: 3% nonfat dry milk in TBST. Detection: ECL Basic Kit (CABM00020). Exposure time: 3s.