

MTIF3 Rabbit Polyclonal Antibody



CAB8524

Product Information

Size:

20uL, 50uL, 100uL, 200uL

Observed MW:

32kDa

Calculated MW:

31kDa

Applications:

WB IHC

Reactivity:

Human, Rat

Protein Background

This gene encodes a translation initiation factor that is involved in mitochondrial protein synthesis. Polymorphism in this gene is associated with the onset of Parkinson's disease. Alternate splicing results in multiple transcript variants. A pseudogene of this gene is found on chromosome 5.

Immunogen information

Gene ID:

219402

Uniprot

Q9H2K0

Synonyms:

MTIF3; IF3mt

Antibody Information

Recommended dilutions:

WB 1:500 - 1:2000 IHC 1:50
- 1:200

Source:

Rabbit

Isotype:

IgG

Purification:

Affinity purification

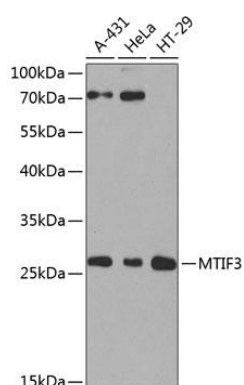
Immunogen:

Recombinant fusion protein containing a sequence corresponding to amino acids 1-278 of human MTIF3 (NP_690876.3).

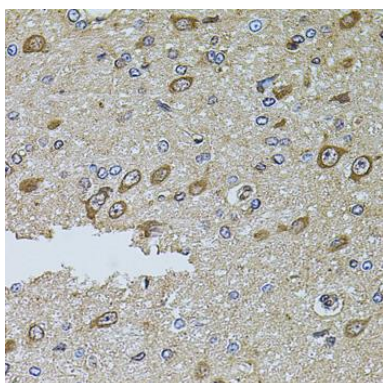
Storage:

Store at -20°C. Avoid freeze / thaw cycles. Buffer: PBS with 0.02% sodium azide, 50% glycerol, pH7.3.

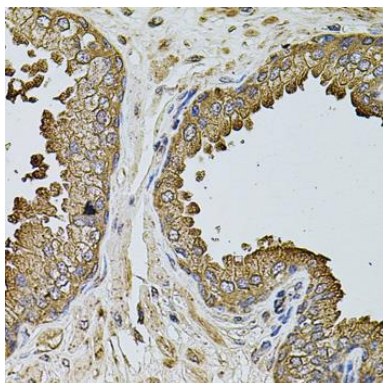
Product Images



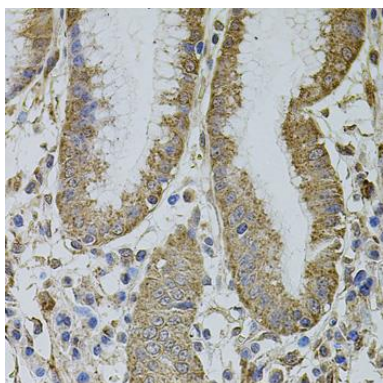
Western blot analysis of extracts of various cell lines, using MTIF3 antibody (CAB8524) at 1:1000 dilution. Secondary antibody: HRP Goat Anti-Rabbit IgG (H+L) (CABS014) at 1:10000 dilution. Lysates/proteins: 25ug per lane. Blocking buffer: 3% nonfat dry milk in TBST. Detection: ECL Basic Kit (CABM00020). Exposure time: 90s.



Immunohistochemistry of paraffin-embedded rat brain using MTIF3 antibody (CAB8524) at dilution of 1:100 (40x lens).



Immunohistochemistry of paraffin-embedded human prostate using MTIF3 antibody (CAB8524) at dilution of 1:100 (40x lens).



Immunohistochemistry of paraffin-embedded human stomach using MTIF3 antibody (CAB8524) at dilution of 1:100 (40x lens).