

PIK3C2A Rabbit Polyclonal Antibody



CAB8526

Product Information

Size:

20uL, 50uL, 100uL, 200uL

Observed MW:

191kDa

Calculated MW:

53kDa/190kDa

Applications:

WB IHC IF IP

Reactivity:

Human, Mouse, Rat

Antibody Information

Recommended dilutions:

WB 1:500 - 1:2000 IHC 1:50
- 1:100 IF 1:50 - 1:100 IP
1:50 - 1:100

Source:

Rabbit

Isotype:

IgG

Purification:

Affinity purification

Protein Background

The protein encoded by this gene belongs to the phosphoinositide 3-kinase (PI3K) family. PI3-kinases play roles in signaling pathways involved in cell proliferation, oncogenic transformation, cell survival, cell migration, and intracellular protein trafficking. This protein contains a lipid kinase catalytic domain as well as a C-terminal C2 domain, a characteristic of class II PI3-kinases. C2 domains act as calcium-dependent phospholipid binding motifs that mediate translocation of proteins to membranes, and may also mediate protein-protein interactions. The PI3-kinase activity of this protein is not sensitive to nanomolar levels of the inhibitor wortmanin. This protein was shown to be able to be activated by insulin and may be involved in integrin-dependent signaling.

Immunogen information

Gene ID:

5286

Uniprot

O00443

Synonyms:

PIK3C2A; CPK; PI3-K-C2(ALPHA); PI3-K-C2A; PI3K-C2-alpha; PI3K-C2alpha

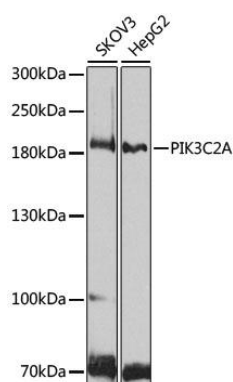
Immunogen:

Recombinant fusion protein containing a sequence corresponding to amino acids 1-200 of human PIK3C2A (NP_002636.2).

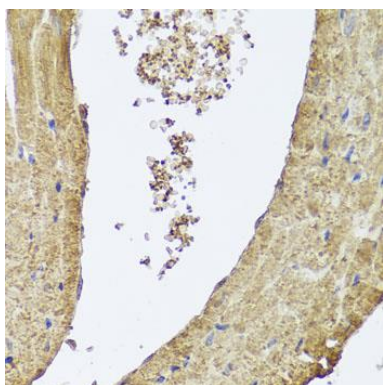
Storage:

Store at -20°C. Avoid freeze / thaw cycles. Buffer: PBS with 0.02% sodium azide, 50% glycerol, pH7.3.

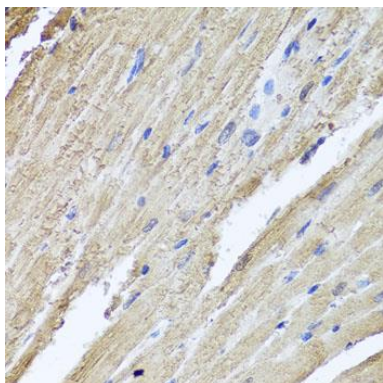
Product Images



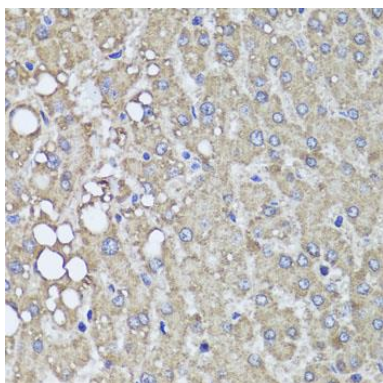
Western blot analysis of extracts of various cell lines, using PIK3C2A antibody (CAB8526) at 1:1000 dilution. Secondary antibody: HRP Goat Anti-Rabbit IgG (H+L) (CABS014) at 1:10000 dilution. Lysates/proteins: 25ug per lane. Blocking buffer: 3% nonfat dry milk in TBST. Detection: ECL Basic Kit (CABM00020). Exposure time: 90s.



Immunohistochemistry of paraffin-embedded mouse heart using PIK3C2A antibody (CAB8526) at dilution of 1:100 (40x lens).



Immunohistochemistry of paraffin-embedded rat heart using PIK3C2A antibody (CAB8526) at dilution of 1:100 (40x lens).



Immunohistochemistry of paraffin-embedded human liver damage using PIK3C2A antibody (CAB8526) at dilution of 1:100 (40x lens).