

# CKAP5 Rabbit Polyclonal Antibody



CAB8532

## Product Information

### Size:

20uL, 50uL, 100uL, 200uL

### Observed MW:

250kDa

### Calculated MW:

218kDa/225kDa/226kDa

### Applications:

WB IF IP

### Reactivity:

Human, Mouse, Rat

## Antibody Information

### Recommended dilutions:

WB 1:500 - 1:2000 IF 1:50 -  
1:200 IP 1:50 - 1:200

### Source:

Rabbit

### Isotype:

IgG

### Purification:

Affinity purification

## Protein Background

This gene encodes a cytoskeleton-associated protein which belongs to the TOG/XMAP215 family. The N-terminal half of this protein contains a microtubule-binding domain and the C-terminal half contains a KXGS motif for binding tubulin dimers. This protein has two distinct roles in spindle formation; it protects kinetochore microtubules from depolymerization and plays an essential role in centrosomal microtubule assembly. This protein may be necessary for the proper interaction of microtubules with the cell cortex for directional cell movement. It also plays a role in translation of the myelin basic protein (MBP) mRNA by interacting with heterogeneous nuclear ribonucleoprotein (hnRNP) A2, which associates with MBP. Alternatively spliced transcript variants encoding different isoforms have been identified.

## Immunogen information

### Gene ID:

9793

### Uniprot

Q14008

### Synonyms:

CKAP5; CHTOG; MSPS; TOG; TOGp; ch-TOG

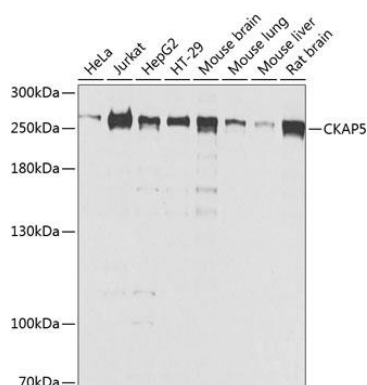
### Immunogen:

Recombinant fusion protein containing a sequence corresponding to amino acids 1763-2032 of human CKAP5 (NP\_001008938.1).

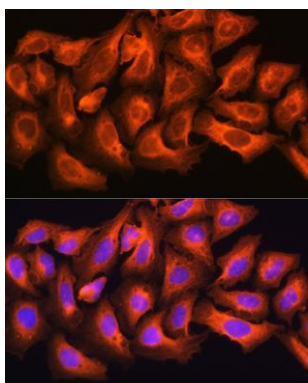
### Storage:

Store at -20°C. Avoid freeze / thaw cycles. Buffer: PBS with 0.02% sodium azide, 50% glycerol, pH7.3.

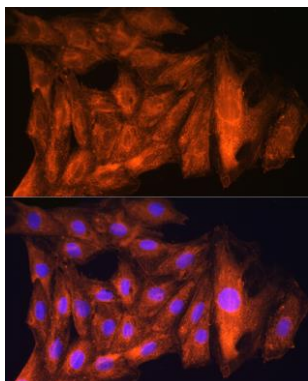
## Product Images



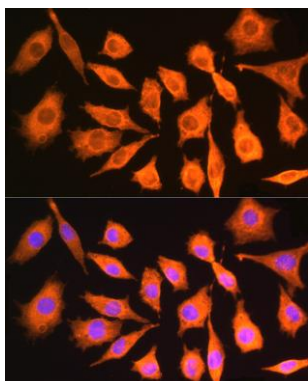
Western blot analysis of extracts of various cell lines, using CKAP5 antibody (CAB8532) at 1:1000 dilution. Secondary antibody: HRP Goat Anti-Rabbit IgG (H+L) (CABS014) at 1:10000 dilution. Lysates/proteins: 25ug per lane. Blocking buffer: 3% nonfat dry milk in TBST. Detection: ECL Basic Kit (CABM00020). Exposure time: 10s.



Immunofluorescence analysis of U2OS cells using CKAP5 antibody (CAB8532) at dilution of 1:100. Blue: DAPI for nuclear staining.



Immunofluorescence analysis of Rat H9C2 cells using CKAP5 antibody (CAB8532) at dilution of 1:100. Blue: DAPI for nuclear staining.



Immunofluorescence analysis of Mouse L929 cells using CKAP5 antibody (CAB8532) at dilution of 1:100. Blue: DAPI for nuclear staining.