

DLG1 Rabbit Polyclonal Antibody



CAB8542

Product Information

Size:

20uL, 50uL, 100uL, 200uL

Observed MW:

114kDa

Calculated MW:

87-103kDa

Applications:

WB IHC IF

Reactivity:

Human, Mouse, Rat

Protein Background

This gene encodes a multi-domain scaffolding protein that is required for normal development. This protein may have a role in septate junction formation, signal transduction, cell proliferation, synaptogenesis and lymphocyte activation. Several alternatively spliced transcript variants encoding different isoforms have been described for this gene, but the full-length nature of some of the variants is not known.

Immunogen information

Gene ID:

1739

Uniprot

Q12959

Synonyms:

DLG1; DLGH1; SAP-97; SAP97; dJ1061C18.1.1; hdlg

Antibody Information

Recommended dilutions:

WB 1:500 - 1:2000 IHC 1:50
- 1:100 IF 1:50 - 1:200

Source:

Rabbit

Isotype:

IgG

Purification:

Affinity purification

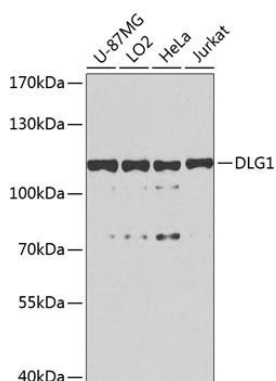
Immunogen:

Recombinant fusion protein containing a sequence corresponding to amino acids 1-190 of human DLG1 (NP_004078.2).

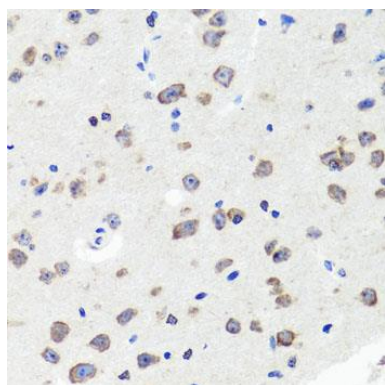
Storage:

Store at -20°C. Avoid freeze / thaw cycles. Buffer: PBS with 0.02% sodium azide, 50% glycerol, pH7.3.

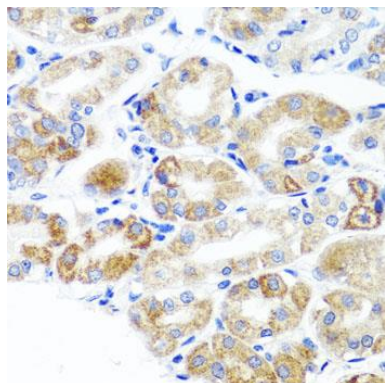
Product Images



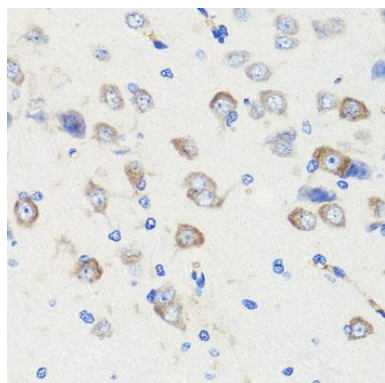
Western blot analysis of extracts of various cell lines, using DLG1 antibody (CAB8542) at 1:1000 dilution. Secondary antibody: HRP Goat Anti-Rabbit IgG (H+L) (CABS014) at 1:10000 dilution. Lysates/proteins: 25ug per lane. Blocking buffer: 3% nonfat dry milk in TBST. Detection: ECL Basic Kit (CABM00020). Exposure time: 90s.



Immunohistochemistry of paraffin-embedded mouse brain using DLG1 antibody (CAB8542) at dilution of 1:100 (40x lens).



Immunohistochemistry of paraffin-embedded human stomach using DLG1 antibody (CAB8542) at dilution of 1:100 (40x lens).



Immunohistochemistry of paraffin-embedded rat brain using DLG1 antibody (CAB8542) at dilution of 1:100 (40x lens).