

# [KO Validated] B4GALT1 Rabbit Polyclonal Antibody

## CAB8546



### Product Information

**Size:**

20uL, 50uL, 100uL, 200uL

**Observed MW:**

55kDa

**Calculated MW:**

42kDa/43kDa

**Applications:**

WB IHC

**Reactivity:**

Human, Mouse, Rat

### Protein Background

This gene is one of seven beta-1, 4-galactosyltransferase (beta4GalT) genes. They encode type II membrane-bound glycoproteins that appear to have exclusive specificity for the donor substrate UDP-galactose; all transfer galactose in a beta1, 4 linkage to similar acceptor sugars: GlcNAc, Glc, and Xyl. Each beta4GalT has a distinct function in the biosynthesis of different glycoconjugates and saccharide structures. As type II membrane proteins, they have an N-terminal hydrophobic signal sequence that directs the protein to the Golgi apparatus and which then remains uncleaved to function as a transmembrane anchor. By sequence similarity, the beta4GalTs form four groups: beta4GalT1 and beta4GalT2, beta4GalT3 and beta4GalT4, beta4GalT5 and beta4GalT6, and beta4GalT7. This gene is unique among the beta4GalT genes because it encodes an enzyme that participates both in glycoconjugate and lactose biosynthesis. For the first activity, the enzyme adds galactose to N-acetylglucosamine residues that are either monosaccharides or the nonreducing ends of glycoprotein carbohydrate chains. The second activity is restricted to lactating mammary tissues where the enzyme forms a heterodimer with alpha-lactalbumin to catalyze UDP-galactose + D-glucose  $\rightleftharpoons$  UDP + lactose. The two enzymatic forms result from alternate transcription initiation sites and post-translational processing. Two transcripts, which differ only at the 5' end, with approximate lengths of 4.1 kb and 3.9 kb encode the same protein. The longer transcript encodes the type II membrane-bound, trans-Golgi resident protein involved in glycoconjugate biosynthesis. The shorter transcript encodes a protein which is cleaved to form the soluble lactose synthase.

### Antibody Information

**Recommended dilutions:**

WB 1:500 - 1:2000 IHC 1:50 - 1:100

**Source:**

Rabbit

**Isotype:**

IgG

**Purification:**

Affinity purification

### Immunogen information

**Gene ID:**

2683

**Uniprot**

P15291

**Synonyms:**

B4GALT1; B4GAL-T1; CDG2D; GGTB2; GT1; GTB; beta4Gal-T1; beta-1

**Immunogen:**

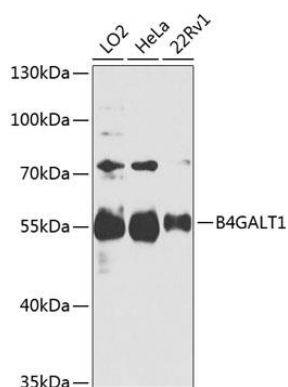
Recombinant fusion protein containing a sequence corresponding to amino acids 50-215 of human B4GALT1 (NP\_001488.2).

**Storage:**

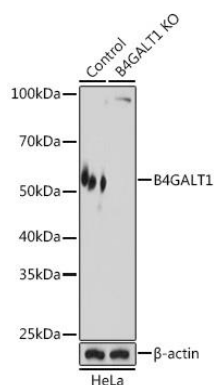
Store at -20°C. Avoid freeze / thaw cycles. Buffer: PBS with 0.02% sodium azide, 50% glycerol, pH7.3.

## Product Images

---



Western blot analysis of extracts of various cell lines, using B4GALT1 antibody (CAB8546) at 1:1000 dilution. Secondary antibody: HRP Goat Anti-Rabbit IgG (H+L) (CABS014) at 1:10000 dilution. Lysates/proteins: 25ug per lane. Blocking buffer: 3% nonfat dry milk in TBST. Detection: ECL Enhanced Kit (CABM00021). Exposure time: 90s.



Western blot analysis of extracts from normal (control) and B4GALT1 knockout (KO) HeLa cells, using B4GALT1 antibody (CAB8546) at 1:3000 dilution. Secondary antibody: HRP Goat Anti-Rabbit IgG (H+L) (CABS014) at 1:10000 dilution. Lysates/proteins: 25ug per lane. Blocking buffer: 3% nonfat dry milk in TBST. Detection: ECL Basic Kit (CABM00020). Exposure time: 1s.