

# THBS2 Rabbit Polyclonal Antibody



CAB8561

---

## Product Information

### Size:

20uL, 50uL, 100uL, 200uL

### Observed MW:

150kDa

### Calculated MW:

129kDa

### Applications:

WB IHC

### Reactivity:

Human, Mouse, Rat

## Protein Background

The protein encoded by this gene belongs to the thrombospondin family. It is a disulfide-linked homotrimeric glycoprotein that mediates cell-to-cell and cell-to-matrix interactions. This protein has been shown to function as a potent inhibitor of tumor growth and angiogenesis. Studies of the mouse counterpart suggest that this protein may modulate the cell surface properties of mesenchymal cells and be involved in cell adhesion and migration.

## Immunogen information

### Gene ID:

7058

### Uniprot

P35442

### Synonyms:

THBS2; TSP2

## Antibody Information

### Recommended dilutions:

WB 1:500 - 1:2000 IHC 1:50  
- 1:100

### Source:

Rabbit

### Isotype:

IgG

### Purification:

Affinity purification

### Immunogen:

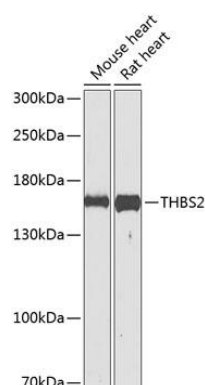
Recombinant fusion protein containing a sequence corresponding to amino acids 20-280 of human THBS2 (NP\_003238.2).

### Storage:

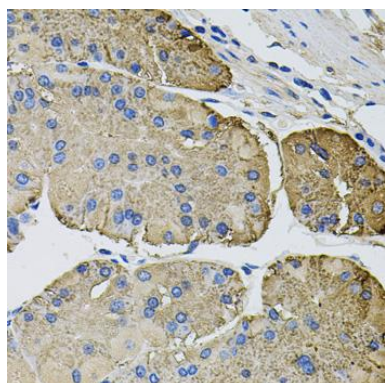
Store at -20°C. Avoid freeze / thaw cycles. Buffer: PBS with 0.02% sodium azide, 50% glycerol, pH7.3.

## Product Images

---



Western blot analysis of extracts of various cell lines, using THBS2 antibody (CAB8561) at 1:1000 dilution. Secondary antibody: HRP Goat Anti-Rabbit IgG (H+L) (CABS014) at 1:10000 dilution. Lysates/proteins: 25ug per lane. Blocking buffer: 3% nonfat dry milk in TBST. Detection: ECL Enhanced Kit (CABM00021). Exposure time: 90s.



Immunohistochemistry of paraffin-embedded human stomach using THBS2 antibody (CAB8561) at dilution of 1:100 (40x lens).