

PRDM2 Rabbit Polyclonal Antibody



CAB8565

Product Information

Size:

20uL, 50uL, 100uL, 200uL

Observed MW:

250kDa

Calculated MW:

25kDa/162kDa/166kDa/184kDa/188kDa

Applications:

WB IHC

Reactivity:

Rat

Antibody Information

Recommended dilutions:

WB 1:500 - 1:2000 IHC 1:50 - 1:200

Source:

Rabbit

Isotype:

IgG

Purification:

Affinity purification

Protein Background

This tumor suppressor gene is a member of a nuclear histone/protein methyltransferase superfamily. It encodes a zinc finger protein that can bind to retinoblastoma protein, estrogen receptor, and the TPA-responsive element (MTE) of the heme-oxygenase-1 gene. Although the functions of this protein have not been fully characterized, it may (1) play a role in transcriptional regulation during neuronal differentiation and pathogenesis of retinoblastoma, (2) act as a transcriptional activator of the heme-oxygenase-1 gene, and (3) be a specific effector of estrogen action. Multiple transcript variants encoding different isoforms have been found for this gene.

Immunogen information

Gene ID:

7799

Uniprot

Q13029

Synonyms:

PRDM2; HUMHOXY1; KMT8; KMT8A; MTB-ZF; RIZ; RIZ1; RIZ2

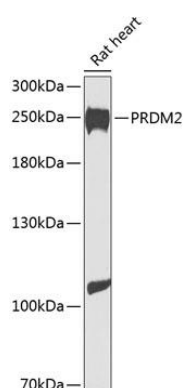
Immunogen:

Recombinant fusion protein containing a sequence corresponding to amino acids 1-240 of human PRDM2 (NP_036363.2).

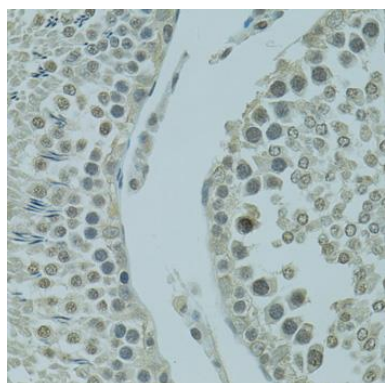
Storage:

Store at -20°C. Avoid freeze / thaw cycles. Buffer: PBS with 0.02% sodium azide, 50% glycerol, pH7.3.

Product Images



Western blot analysis of extracts of rat heart, using PRDM2 antibody (CAB8565) at 1:1000 dilution. Secondary antibody: HRP Goat Anti-Rabbit IgG (H+L) (CABS014) at 1:10000 dilution. Lysates/proteins: 25ug per lane. Blocking buffer: 3% nonfat dry milk in TBST. Detection: ECL Enhanced Kit (CABM00021). Exposure time: 90s.



Immunohistochemistry of paraffin-embedded rat testis using PRDM2 antibody (CAB8565) at dilution of 1:100 (40x lens).