

IER3 Rabbit Polyclonal Antibody



CAB8566

Product Information

Size:

20uL, 50uL, 100uL, 200uL

Observed MW:

17kDa

Calculated MW:

16kDa

Applications:

WB IHC

Reactivity:

Human, Mouse

Protein Background

This gene functions in the protection of cells from Fas- or tumor necrosis factor type alpha-induced apoptosis. Partially degraded and unspliced transcripts are found after virus infection in vitro, but these transcripts are not found in vivo and do not generate a valid protein.

Immunogen information

Gene ID:

8870

Uniprot

P46695

Synonyms:

IER3; DIF-2; DIF2; GLY96; IEX-1; IEX-1L; IEX1; PRG1

Antibody Information

Recommended dilutions:

WB 1:500 - 1:2000 IHC 1:50
- 1:100

Source:

Rabbit

Isotype:

IgG

Purification:

Affinity purification

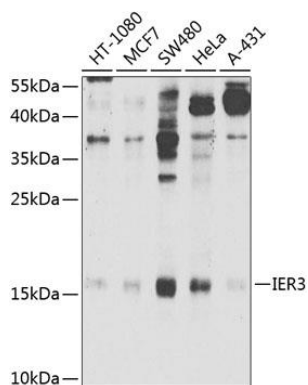
Immunogen:

A synthetic peptide corresponding to a sequence within amino acids 50 to the C-terminus of human IER3 (NP_003888.2).

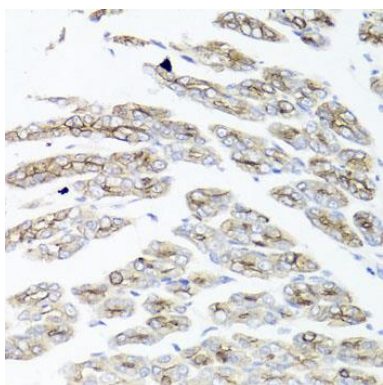
Storage:

Store at -20°C. Avoid freeze / thaw cycles. Buffer: PBS with 0.02% sodium azide, 50% glycerol, pH7.3.

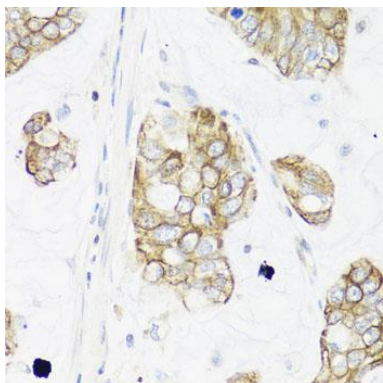
Product Images



Western blot analysis of extracts of various cell lines, using IER3 Antibody (CAB8566) at 1:1000 dilution. Secondary antibody: HRP Goat Anti-Rabbit IgG (H+L) (CABS014) at 1:10000 dilution. Lysates/proteins: 25ug per lane. Blocking buffer: 3% nonfat dry milk in TBST. Detection: ECL Enhanced Kit (CABM00021). Exposure time: 90s.



Immunohistochemistry of paraffin-embedded mouse stomach using IER3 antibody (CAB8566) at dilution of 1:100 (40x lens).



Immunohistochemistry of paraffin-embedded human gastric cancer using IER3 antibody (CAB8566) at dilution of 1:100 (40x lens).