

TRPA1 Rabbit Polyclonal Antibody



CAB8568

Product Information

Size:

20uL, 50uL, 100uL, 200uL

Observed MW:

128kDa

Calculated MW:

127kDa

Applications:

WB IHC IF

Reactivity:

Human, Mouse, Rat

Protein Background

The structure of the protein encoded by this gene is highly related to both the protein ankyrin and transmembrane proteins. The specific function of this protein has not yet been determined; however, studies indicate the function may involve a role in signal transduction and growth control.

Immunogen information

Gene ID:

8989

Uniprot

O75762

Synonyms:

TRPA1; ANKTM1; FEPS

Antibody Information

Recommended dilutions:

WB 1:500 - 1:2000 IHC 1:50
- 1:200 IF 1:50 - 1:200

Source:

Rabbit

Isotype:

IgG

Purification:

Affinity purification

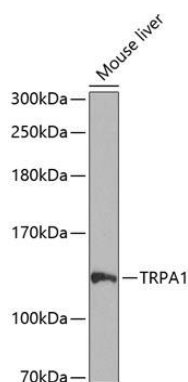
Immunogen:

A synthetic peptide corresponding to a sequence within amino acids 850-950 of human TRPA1 (NP_015628.2).

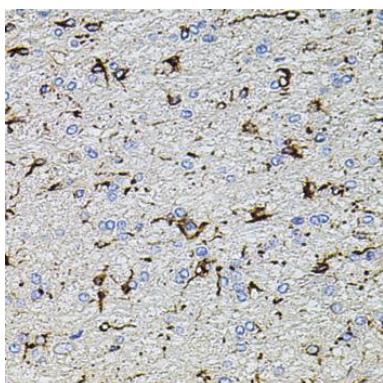
Storage:

Store at -20°C. Avoid freeze / thaw cycles. Buffer: PBS with 0.02% sodium azide, 50% glycerol, pH7.3.

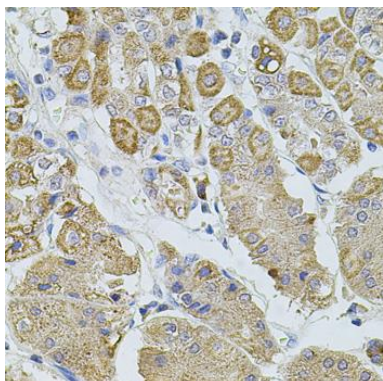
Product Images



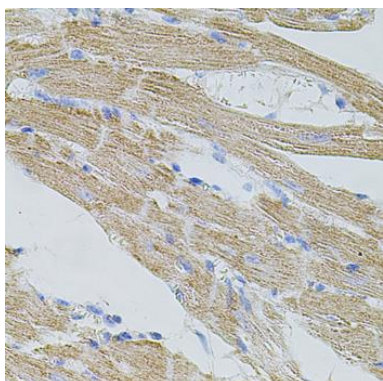
Western blot analysis of extracts of mouse liver, using TRPA1 antibody (CAB8568) at 1:1000 dilution. Secondary antibody: HRP Goat Anti-Rabbit IgG (H+L) (CABS014) at 1:10000 dilution. Lysates/proteins: 25ug per lane. Blocking buffer: 3% nonfat dry milk in TBST. Detection: ECL Enhanced Kit (CABM00021). Exposure time: 90s.



Immunohistochemistry of paraffin-embedded rat brain using TRPA1 antibody (CAB8568) at dilution of 1:100 (40x lens).



Immunohistochemistry of paraffin-embedded human stomach using TRPA1 antibody (CAB8568) at dilution of 1:100 (40x lens).



Immunohistochemistry of paraffin-embedded mouse heart using TRPA1 antibody (CAB8568) at dilution of 1:100 (40x lens).