

# GNE Rabbit Polyclonal Antibody



CAB8570

## Product Information

### Size:

20uL, 50uL, 100uL, 200uL

### Observed MW:

79kDa

### Calculated MW:

66kDa/71kDa/78kDa/79kDa/  
83kDa

### Applications:

WB IHC

### Reactivity:

Human, Mouse, Rat

## Antibody Information

### Recommended dilutions:

WB 1:500 - 1:2000 IHC 1:50  
- 1:100

### Source:

Rabbit

### Isotype:

IgG

### Purification:

Affinity purification

## Protein Background

The protein encoded by this gene is a bifunctional enzyme that initiates and regulates the biosynthesis of N-acetylneuraminic acid (NeuAc), a precursor of sialic acids. It is a rate-limiting enzyme in the sialic acid biosynthetic pathway. Sialic acid modification of cell surface molecules is crucial for their function in many biologic processes, including cell adhesion and signal transduction. Differential sialylation of cell surface molecules is also implicated in the tumorigenicity and metastatic behavior of malignant cells. Mutations in this gene are associated with sialuria, autosomal recessive inclusion body myopathy, and Nonaka myopathy. Alternative splicing of this gene results in transcript variants encoding different isoforms.

## Immunogen information

### Gene ID:

10020

### Uniprot

Q9Y223

### Synonyms:

GNE; DMRV; GLCNE; IBM2; NM; Uae1

### Immunogen:

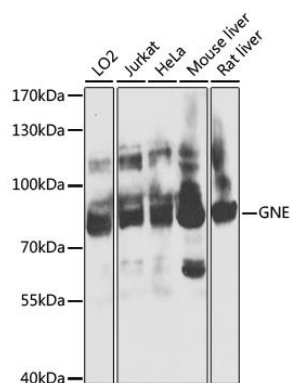
Recombinant fusion protein containing a sequence corresponding to amino acids 1-150 of human GNE (NP\_001121699.1).

### Storage:

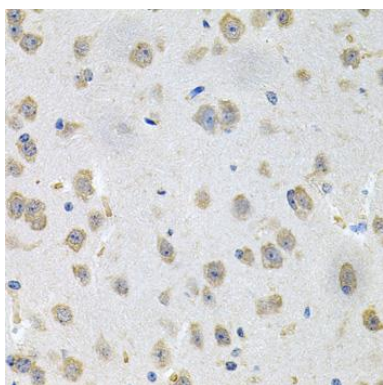
Store at -20°C. Avoid freeze / thaw cycles. Buffer: PBS with 0.02% sodium azide, 50% glycerol, pH7.3.

## Product Images

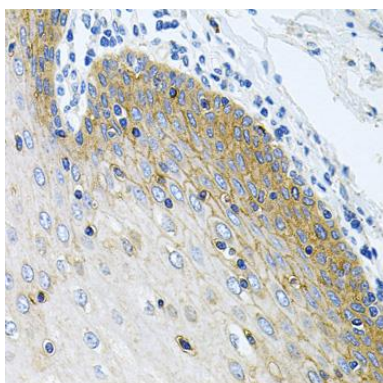
---



Western blot analysis of extracts of various cell lines, using GNE antibody (CAB8570) at 1:1000 dilution. Secondary antibody: HRP Goat Anti-Rabbit IgG (H+L) (CABS014) at 1:10000 dilution. Lysates/proteins: 25ug per lane. Blocking buffer: 3% nonfat dry milk in TBST. Detection: ECL Basic Kit (CABM00020). Exposure time: 10s.



Immunohistochemistry of paraffin-embedded mouse brain using GNE antibody (CAB8570) at dilution of 1:100 (40x lens).



Immunohistochemistry of paraffin-embedded human esophagus using GNE antibody (CAB8570) at dilution of 1:100 (40x lens).