

GPHN Rabbit Polyclonal Antibody



CAB8572

Product Information

Size:

20uL, 50uL, 100uL, 200uL

Observed MW:

103kDa

Calculated MW:

79kDa/83kDa

Applications:

WB IHC IF

Reactivity:

Human, Mouse, Rat

Protein Background

This gene encodes a neuronal assembly protein that anchors inhibitory neurotransmitter receptors to the postsynaptic cytoskeleton via high affinity binding to a receptor subunit domain and tubulin dimers. In nonneuronal tissues, the encoded protein is also required for molybdenum cofactor biosynthesis. Mutations in this gene may be associated with the neurological condition hyperplexia and also lead to molybdenum cofactor deficiency. Numerous alternatively spliced transcript variants encoding different isoforms have been described; however, the full-length nature of all transcript variants is not currently known.

Immunogen information

Gene ID:

10243

Uniprot

Q9NQX3

Synonyms:

GPHN; GEPH; GPH; GPHRYN; HKPX1; MOCODC; gephyrin

Antibody Information

Recommended dilutions:

WB 1:500 - 1:2000 IHC 1:50
- 1:100 IF 1:100 - 1:200

Source:

Rabbit

Isotype:

IgG

Purification:

Affinity purification

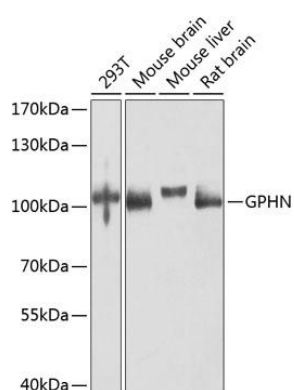
Immunogen:

Recombinant fusion protein containing a sequence corresponding to amino acids 520-769 of human GPHN (NP_065857.1).

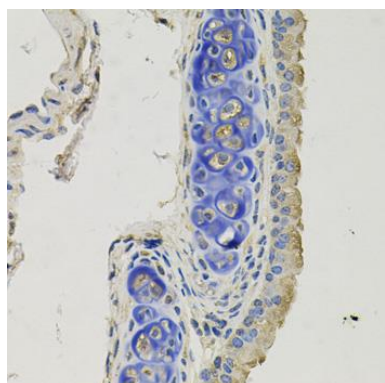
Storage:

Store at -20°C. Avoid freeze / thaw cycles. Buffer: PBS with 0.02% sodium azide, 50% glycerol, pH7.3.

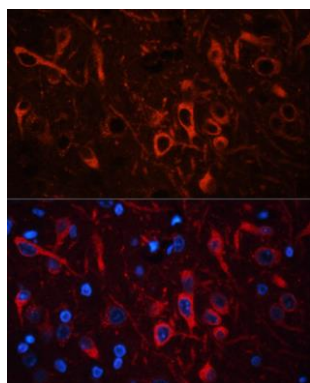
Product Images



Western blot analysis of extracts of various cell lines, using GPHN antibody (CAB8572) at 1:1000 dilution. Secondary antibody: HRP Goat Anti-Rabbit IgG (H+L) (CABS014) at 1:10000 dilution. Lysates/proteins: 25ug per lane. Blocking buffer: 3% nonfat dry milk in TBST. Detection: ECL Basic Kit (CABM00020). Exposure time: 30s.



Immunohistochemistry of paraffin-embedded mouse lung using GPHN antibody (CAB8572) at dilution of 1:100 (40x lens).



Immunofluorescence analysis of rat brain using GPHN antibody (CAB8572) at dilution of 1:100 (40x lens). Blue: DAPI for nuclear staining.