

NPHP3 Rabbit Polyclonal Antibody



CAB8580

Product Information

Size:

20uL, 50uL, 100uL, 200uL

Observed MW:

151kDa

Calculated MW:

15kDa/19kDa/26kDa/71kDa/
73kDa/79kDa/150kDa

Applications:

WB

Reactivity:

Human, Mouse

Antibody Information

Recommended dilutions:

WB 1:200 - 1:2000

Source:

Rabbit

Isotype:

IgG

Purification:

Affinity purification

Protein Background

This gene encodes a protein containing a coiled-coil (CC) domain, a tubulin-tyrosine ligase (TTL) domain, and a tetratricopeptide repeat (TPR) domain. The encoded protein interacts with nephrocystin, it is required for normal ciliary development, and it functions in renal tubular development. Mutations in this gene are associated with nephronophthisis type 3, and also with renal-hepatic-pancreatic dysplasia, and Meckel syndrome type 7. Naturally occurring read-through transcripts exist between this gene and the downstream ACAD11 (acyl-CoA dehydrogenase family, member 11) gene.

Immunogen information

Gene ID:

27031

Uniprot

Q7Z494

Synonyms:

NPHP3; CFAP31; MKS7; NPH3; RHPD; RHPD1; SLSN3

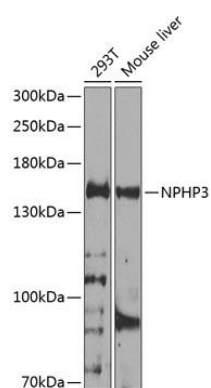
Immunogen:

Recombinant fusion protein containing a sequence corresponding to amino acids 1-130 of human NPHP3 (NP_694972.3).

Storage:

Store at -20°C. Avoid freeze / thaw cycles. Buffer: PBS with 0.02% sodium azide, 50% glycerol, pH7.3.

Product Images



Western blot analysis of extracts of various cell lines, using NPHP3 antibody (CAB8580) at 1:1000 dilution. Secondary antibody: HRP Goat Anti-Rabbit IgG (H+L) (CABS014) at 1:10000 dilution. Lysates/proteins: 25ug per lane. Blocking buffer: 3% nonfat dry milk in TBST. Detection: ECL Basic Kit (CABM00020). Exposure time: 30s.