

CEMIP Rabbit Polyclonal Antibody



CAB8587

Product Information

Size:

20uL, 50uL, 100uL, 200uL

Observed MW:

180kDa

Calculated MW:

110kDa/152kDa

Applications:

WB IHC

Reactivity:

Human, Mouse

Antibody Information

Recommended dilutions:

WB 1:500 - 1:2000 IHC 1:50
- 1:200

Source:

Rabbit

Isotype:

IgG

Purification:

Affinity purification

Protein Background

Immunogen information

Gene ID:

57214

Uniprot

Q8WUJ3

Synonyms:

CEMIP; CCSP1; HYBID; KIAA1199; TMEM2L

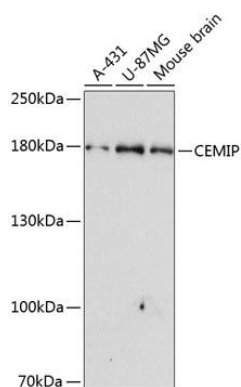
Immunogen:

Recombinant fusion protein containing a sequence corresponding to amino acids 180-420 of human CEMIP (NP_061159.1).

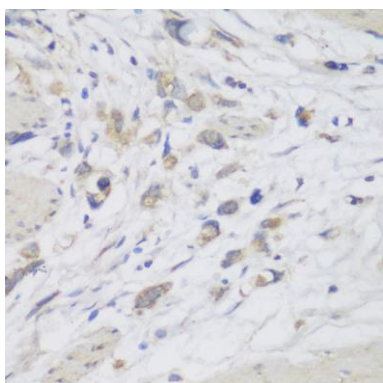
Storage:

Store at -20°C. Avoid freeze / thaw cycles. Buffer: PBS with 0.02% sodium azide, 50% glycerol, pH7.3.

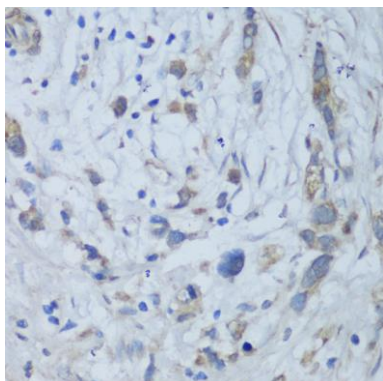
Product Images



Western blot analysis of extracts of various cell lines, using CEMIP antibody (CAB8587) at 1:3000 dilution. Secondary antibody: HRP Goat Anti-Rabbit IgG (H+L) (CABS014) at 1:10000 dilution. Lysates/proteins: 25ug per lane. Blocking buffer: 3% nonfat dry milk in TBST. Detection: ECL Enhanced Kit (CABM00021). Exposure time: 90s.



Immunohistochemistry of paraffin-embedded human lung cancer using CEMIP antibody (CAB8587) at dilution of 1:150 (40x lens).



Immunohistochemistry of paraffin-embedded human gastric cancer using CEMIP antibody (CAB8587) at dilution of 1:150 (40x lens).