

TMC1 Rabbit Polyclonal Antibody



CAB8595

Product Information

Size:

20uL, 50uL, 100uL, 200uL

Observed MW:

88kDa

Calculated MW:

87kDa

Applications:

WB IHC

Reactivity:

Human, Mouse, Rat

Protein Background

This gene is considered a member of a gene family predicted to encode transmembrane proteins. The specific function of this gene is unknown; however, it is known to be required for normal function of cochlear hair cells. Mutations in this gene have been associated with progressive postlingual hearing loss and profound prelingual deafness.

Immunogen information

Gene ID:

117531

Uniprot

Q8TDI8

Synonyms:

TMC1; DFNA36; DFNB11; DFNB7

Antibody Information

Recommended dilutions:

WB 1:500 - 1:2000 IHC 1:50
- 1:200

Source:

Rabbit

Isotype:

IgG

Purification:

Affinity purification

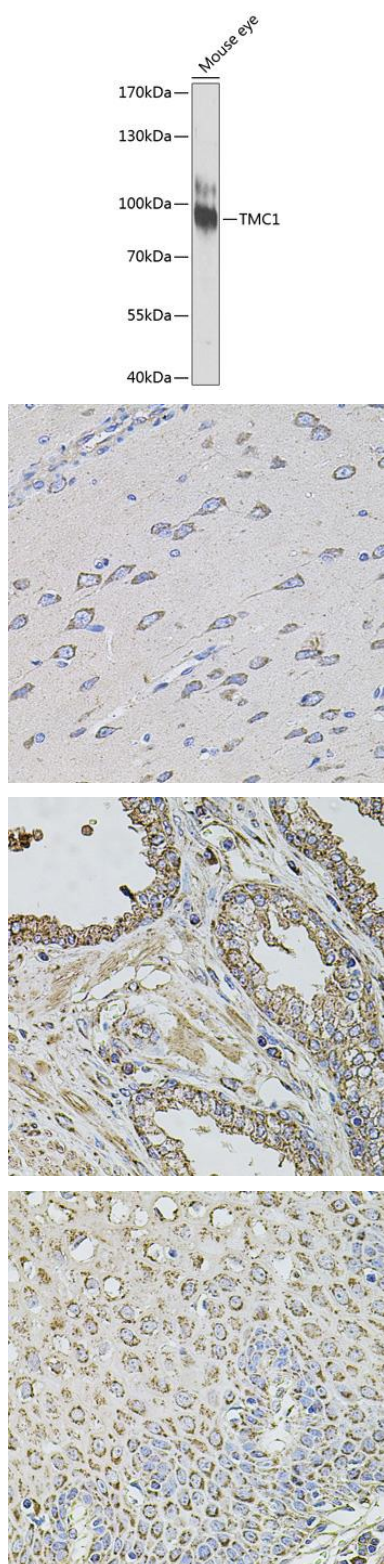
Immunogen:

A synthetic peptide corresponding to a sequence within amino acids 600-700 of human TMC1 (NP_619636.2).

Storage:

Store at -20°C. Avoid freeze / thaw cycles. Buffer: PBS with 0.02% sodium azide, 50% glycerol, pH7.3.

Product Images



Western blot analysis of extracts of mouse eye, using TMC1 antibody (CAB8595) at 1:1000 dilution. Secondary antibody: HRP Goat Anti-Rabbit IgG (H+L) (CABS014) at 1:10000 dilution. Lysates/proteins: 25ug per lane. Blocking buffer: 3% nonfat dry milk in TBST. Detection: ECL Enhanced Kit (CABM00021). Exposure time: 90s.

Immunohistochemistry of paraffin-embedded rat brain using TMC1 antibody (CAB8595) at dilution of 1:100 (40x lens).

Immunohistochemistry of paraffin-embedded human prostate using TMC1 antibody (CAB8595) at dilution of 1:100 (40x lens).

Immunohistochemistry of paraffin-embedded human esophagus using TMC1 antibody (CAB8595) at dilution of 1:100 (40x lens).