

# KIFC3 Rabbit Polyclonal Antibody



CAB8617

## Product Information

### Size:

20uL, 50uL, 100uL, 200uL

### Observed MW:

120kDa

### Calculated MW:

71kDa/77kDa/92kDa/94kDa

### Applications:

WB

### Reactivity:

Human, Rat

## Protein Background

This gene encodes a member of the kinesin-14 family of microtubule motors. Members of this family play a role in the formation, maintenance and remodeling of the bipolar mitotic spindle. The protein encoded by this gene has cytoplasmic functions in the interphase cells. It may also be involved in the final stages of cytokinesis. Alternative splicing results in multiple transcript variants encoding different isoforms.

## Immunogen information

### Gene ID:

3801

### Uniprot

Q9BVG8

### Synonyms:

KIFC3

## Antibody Information

### Recommended dilutions:

WB 1:200 - 1:2000

### Source:

Rabbit

### Isotype:

IgG

### Purification:

Affinity purification

### Immunogen:

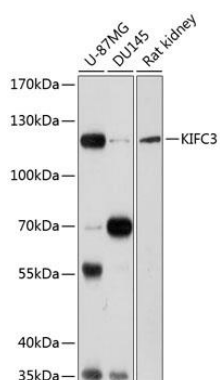
Recombinant fusion protein containing a sequence corresponding to amino acids 140-390 of human KIFC3 (NP\_005541.3).

### Storage:

Store at -20°C. Avoid freeze / thaw cycles. Buffer: PBS with 0.02% sodium azide, 50% glycerol, pH7.3.

## Product Images

---



Western blot analysis of extracts of various cell lines, using KIFC3 antibody (CAB8617) at 1:1000 dilution. Secondary antibody: HRP Goat Anti-Rabbit IgG (H+L) (CABS014) at 1:10000 dilution. Lysates/proteins: 25ug per lane. Blocking buffer: 3% nonfat dry milk in TBST. Detection: ECL Basic Kit (CABM00020). Exposure time: 30s.