

# ALDH7A1 Rabbit Polyclonal Antibody



CAB8629

## Product Information

### Size:

20uL, 50uL, 100uL, 200uL

### Observed MW:

58kDa

### Calculated MW:

51kDa/55kDa/58kDa

### Applications:

WB IHC IF

### Reactivity:

Human, Mouse, Rat

## Antibody Information

### Recommended dilutions:

WB 1:1000 - 1:4000 IHC  
1:50 - 1:200 IF 1:50 - 1:200

### Source:

Rabbit

### Isotype:

IgG

### Purification:

Affinity purification

## Protein Background

The protein encoded by this gene is a member of subfamily 7 in the aldehyde dehydrogenase gene family. These enzymes are thought to play a major role in the detoxification of aldehydes generated by alcohol metabolism and lipid peroxidation. This particular member has homology to a previously described protein from the green garden pea, the 26g pea turgor protein. It is also involved in lysine catabolism that is known to occur in the mitochondrial matrix. Recent reports show that this protein is found both in the cytosol and the mitochondria, and the two forms likely arise from the use of alternative translation initiation sites. An additional variant encoding a different isoform has also been found for this gene. Mutations in this gene are associated with pyridoxine-dependent epilepsy. Several related pseudogenes have also been identified.

## Immunogen information

### Gene ID:

501

### Uniprot

P49419

### Synonyms:

ALDH7A1; ATQ1; EPD; PDE

### Immunogen:

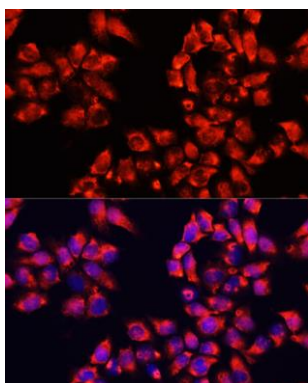
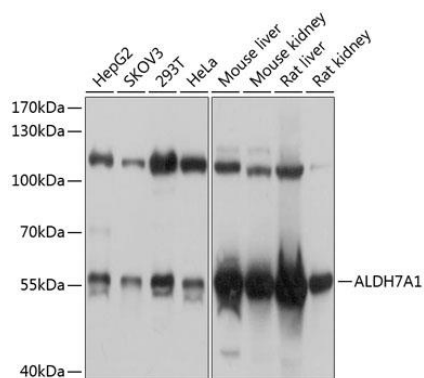
Recombinant fusion protein containing a sequence corresponding to amino acids 430-539 of human ALDH7A1 (NP\_001173.2).

### Storage:

Store at -20°C. Avoid freeze / thaw cycles. Buffer: PBS with 0.02% sodium azide, 50% glycerol, pH7.3.

## Product Images

---



Western blot analysis of extracts of various cell lines, using ALDH7A1 antibody (CAB8629) at 1:1000 dilution. Secondary antibody: HRP Goat Anti-Rabbit IgG (H+L) (CABS014) at 1:10000 dilution. Lysates/proteins: 25ug per lane. Blocking buffer: 3% nonfat dry milk in TBST. Detection: ECL Basic Kit (CABM00020). Exposure time: 1s.

Immunofluorescence analysis of HeLa cells using ALDH7A1 antibody (CAB8629) at dilution of 1:100. Blue: DAPI for nuclear staining.