

# SOX10 Rabbit Polyclonal Antibody



CAB8635

## Product Information

### Size:

100uL, 200uL

### Observed MW:

60kDa

### Calculated MW:

31kDa/49kDa

### Applications:

WB IHC IF

### Reactivity:

Human, Mouse, Rat

## Protein Background

This gene encodes a member of the SOX (SRY-related HMG-box) family of transcription factors involved in the regulation of embryonic development and in the determination of the cell fate. The encoded protein may act as a transcriptional activator after forming a protein complex with other proteins. This protein acts as a nucleocytoplasmic shuttle protein and is important for neural crest and peripheral nervous system development. Mutations in this gene are associated with Waardenburg-Shah and Waardenburg-Hirschsprung disease.

## Immunogen information

### Gene ID:

6663

### Uniprot

P56693

### Synonyms:

SOX10; DOM; PCWH; WS2E; WS4; WS4C

## Antibody Information

### Recommended dilutions:

WB 1:500 - 1:1000 IHC 1:50  
- 1:50 IF 1:50 - 1:200

### Source:

Rabbit

### Isotype:

IgG

### Purification:

Affinity purification

### Immunogen:

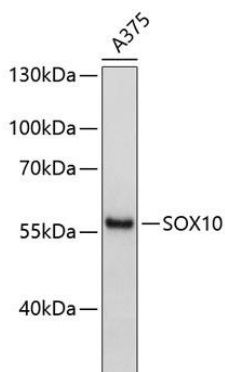
A synthetic Peptide of human SOX10

### Storage:

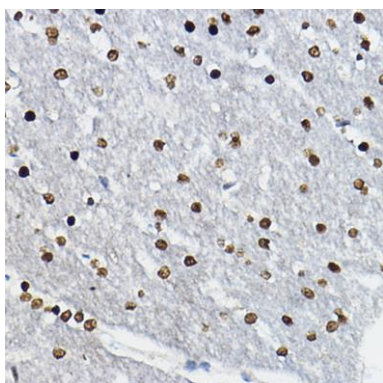
Store at -20°C. Avoid freeze / thaw cycles. Buffer: PBS with 0.02% sodium azide, 50% glycerol, pH7.3.

## Product Images

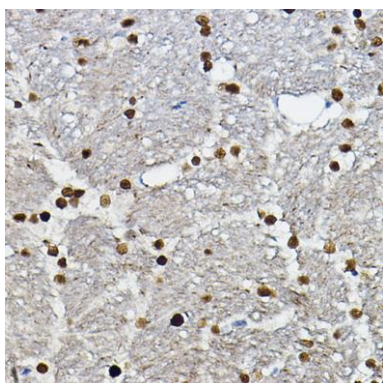
---



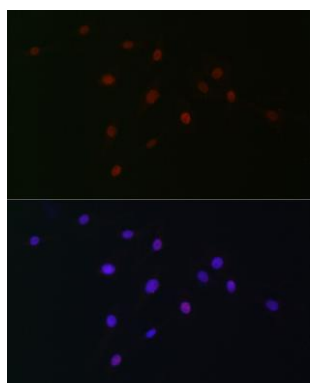
Western blot analysis of extracts of A-375 cells, using SOX10 antibody (CAB8635). Secondary antibody: HRP Goat Anti-Rabbit IgG (H+L) (CABS014) at 1:10000 dilution. Lysates/proteins: 25ug per lane. Blocking buffer: 3% nonfat dry milk in TBST.



Immunohistochemistry of paraffin-embedded rat brain using SOX10 Rabbit pAb (CAB8635) at dilution of 1:100 (40x lens).



Immunohistochemistry of paraffin-embedded mouse brain using SOX10 Rabbit pAb (CAB8635) at dilution of 1:100 (40x lens).



Immunofluorescence analysis of C6 cells using SOX10 Rabbit pAb (CAB8635) at dilution of 1:100 (40x lens). Blue: DAPI for nuclear staining.