

EIF3J Rabbit Polyclonal Antibody



CAB8637

Product Information

Size:

20uL, 50uL, 100uL, 200uL

Observed MW:

37kDa

Calculated MW:

22kDa/23kDa/29kDa

Applications:

WB IHC IF

Reactivity:

Human, Mouse, Rat

Protein Background

This gene encodes a core subunit of the eukaryotic initiation factor 3 complex, which participates in the initiation of translation by aiding in the recruitment of protein and mRNA components to the 40S ribosome. There are pseudogenes for this gene on chromosomes 1, 3, and 9. Alternative splicing results in multiple transcript variants encoding different isoforms.

Immunogen information

Gene ID:

8669

Uniprot

O75822

Synonyms:

EIF3J; EIF3S1; eIF3-alpha; eIF3-p35

Antibody Information

Recommended dilutions:

WB 1:200 - 1:2000 IHC 1:50
- 1:200 IF 1:50 - 1:200

Source:

Rabbit

Isotype:

IgG

Purification:

Affinity purification

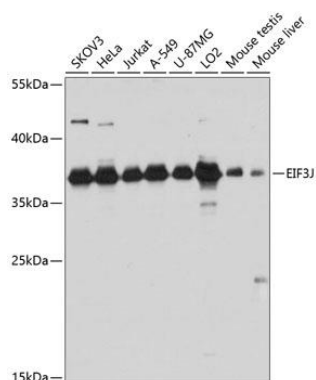
Immunogen:

Recombinant fusion protein containing a sequence corresponding to amino acids 1-258 of human EIF3J (NP_003749.2).

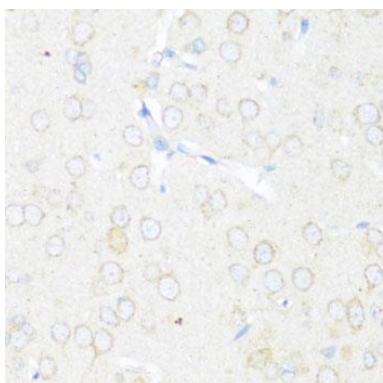
Storage:

Store at -20°C. Avoid freeze / thaw cycles. Buffer: PBS with 0.02% sodium azide, 50% glycerol, pH7.3.

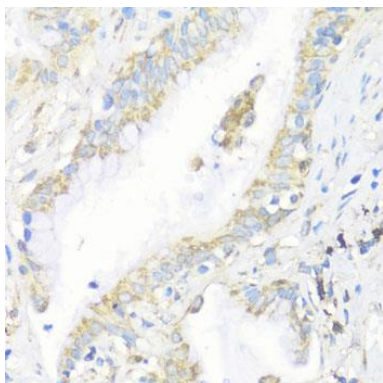
Product Images



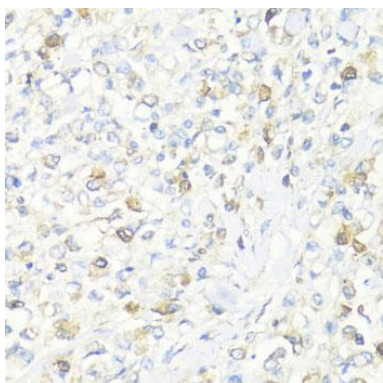
Western blot analysis of extracts of various cell lines, using EIF3J antibody (CAB8637) at 1:3000 dilution. Secondary antibody: HRP Goat Anti-Rabbit IgG (H+L) (CABS014) at 1:10000 dilution. Lysates/proteins: 25ug per lane. Blocking buffer: 3% nonfat dry milk in TBST. Detection: ECL Basic Kit (CABM00020). Exposure time: 10s.



Immunohistochemistry of paraffin-embedded rat brain using EIF3J antibody (CAB8637) at dilution of 1:100 (40x lens).



Immunohistochemistry of paraffin-embedded human lung using EIF3J antibody (CAB8637) at dilution of 1:100 (40x lens).



Immunohistochemistry of paraffin-embedded human gastric cancer using EIF3J antibody (CAB8637) at dilution of 1:100 (40x lens).