

MFF Rabbit Monoclonal Antibody



CAB8700

Product Information

Size:

20uL, 50uL, 100uL, 200uL

Observed MW:

35KDa

Calculated MW:

34kDa

Applications:

WB

Reactivity:

Mouse, Rat

Protein Background

This is a nuclear gene encoding a protein that functions in mitochondrial and peroxisomal fission. The encoded protein recruits dynamin-1-like protein (DNM1L) to mitochondria. There are multiple pseudogenes for this gene on chromosomes 1, 5, and X. Alternative splicing results in multiple transcript variants. [provided by RefSeq, Mar 2013]

Immunogen information

Gene ID:

56947

Uniprot

Q9GZY8

Synonyms:

C2orf33; EMPF2; GL004

Antibody Information

Recommended dilutions:

WB 1:500 - 1:2000

Source:

Rabbit

Isotype:

IgG

Purification:

Affinity purification

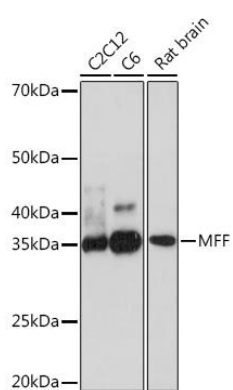
Immunogen:

A synthesized peptide derived from human MFF

Storage:

Store at -20°C. Avoid freeze / thaw cycles. Buffer: PBS with 0.02% sodium azide, 0.05% BSA, 50% glycerol, pH7.3.

Product Images



Western blot - MFF Rabbit mAb (CAB8700)