

# FKBP38 Rabbit Monoclonal Antibody



CAB8701

---

## Product Information

### Size:

20uL, 50uL, 100uL, 200uL

### Observed MW:

49KDa

### Calculated MW:

52kDa

### Applications:

WB IF

### Reactivity:

Human, Mouse, Rat

## Protein Background

The protein encoded by this gene is a member of the immunophilin protein family, which play a role in immunoregulation and basic cellular processes involving protein folding and trafficking. Unlike the other members of the family, this encoded protein does not seem to have PPlase/rotamase activity. It may have a role in neurons associated with memory function. [provided by RefSeq, Jul 2008]

## Immunogen information

### Gene ID:

23770

### Uniprot

Q14318

### Synonyms:

FKBP38; FKBP38

## Antibody Information

### Recommended dilutions:

WB 1:500 - 1:2000 IF 1:50 - 1:200

### Source:

Rabbit

### Isotype:

IgG

### Purification:

Affinity purification

### Immunogen:

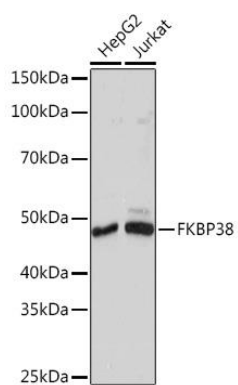
A synthesized peptide derived from human FKBP38

### Storage:

Store at -20°C. Avoid freeze / thaw cycles. Buffer: PBS with 0.02% sodium azide, 0.05% BSA, 50% glycerol, pH7.3.

## Product Images

---



Western blot - FKBP38 Rabbit mAb (CAB8701)