

Calpain 1 Rabbit Monoclonal Antibody



CAB8710

Product Information

Size:

20uL, 50uL, 100uL, 200uL

Observed MW:

75KDa

Calculated MW:

75, 80kDa

Applications:

WB IF

Reactivity:

Human, Mouse, Rat

Protein Background

The calpains, calcium-activated neutral proteases, are nonlysosomal, intracellular cysteine proteases. The mammalian calpains include ubiquitous, stomach-specific, and muscle-specific proteins. The ubiquitous enzymes consist of heterodimers with distinct large, catalytic subunits associated with a common small, regulatory subunit. This gene encodes the large subunit of the ubiquitous enzyme, calpain 1. Several transcript variants encoding two different isoforms have been found for this gene. [provided by RefSeq, Nov 2010]

Immunogen information

Gene ID:

823

Uniprot

P07384

Synonyms:

CANP; CANP1; CANPL1; SPG76; muCANP; muCL

Antibody Information

Recommended dilutions:

WB 1:500 - 1:2000 IF 1:50 - 1:200

Source:

Rabbit

Isotype:

IgG

Purification:

Affinity purification

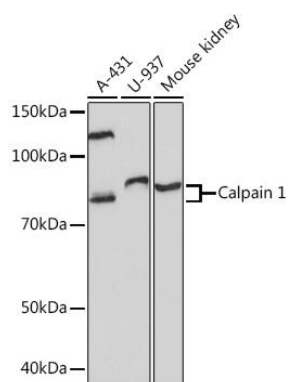
Immunogen:

A synthesized peptide derived from human Calpain 1

Storage:

Store at -20°C. Avoid freeze / thaw cycles. Buffer: PBS with 0.02% sodium azide, 0.05% BSA, 50% glycerol, pH7.3.

Product Images



Western blot - Calpain 1 Rabbit mAb (CAB8710)