

PUS1 Rabbit Polyclonal Antibody



CAB8720

Product Information

Size:

20uL, 50uL, 100uL, 200uL

Observed MW:

47kDa

Calculated MW:

44kDa/47kDa

Applications:

WB

Reactivity:

Human

Protein Background

This gene encodes a pseudouridine synthase that converts uridine to pseudouridine once it has been incorporated into an RNA molecule. The encoded enzyme may play an essential role in tRNA function and in stabilizing the secondary and tertiary structure of many RNAs. A mutation in this gene has been linked to mitochondrial myopathy and sideroblastic anemia. Alternate splicing results in multiple transcript variants.

Immunogen information

Gene ID:

80324

Uniprot

Q9Y606

Synonyms:

PUS1; MLASA1

Antibody Information

Recommended dilutions:

WB 1:500 - 1:2000

Source:

Rabbit

Isotype:

IgG

Purification:

Affinity purification

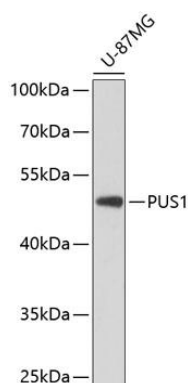
Immunogen:

Recombinant fusion protein containing a sequence corresponding to amino acids 308-427 of human PUS1 (NP_079491.2).

Storage:

Store at -20°C. Avoid freeze / thaw cycles. Buffer: PBS with 0.02% sodium azide, 50% glycerol, pH7.3.

Product Images



Western blot analysis of extracts of U-87MG cells, using PUS1 antibody (CAB8720) at 1:3000 dilution. Secondary antibody: HRP Goat Anti-Rabbit IgG (H+L) (CABS014) at 1:10000 dilution. Lysates/proteins: 25ug per lane. Blocking buffer: 3% nonfat dry milk in TBST. Detection: ECL Basic Kit (CABM00020). Exposure time: 90s.