

CENPJ Rabbit Polyclonal Antibody



CAB8721

Product Information

Size:

20uL, 50uL, 100uL, 200uL

Observed MW:

153kDa

Calculated MW:

124kDa/153kDa

Applications:

WB

Reactivity:

Human, Mouse, Rat

Antibody Information

Recommended dilutions:

WB 1:500 - 1:2000

Source:

Rabbit

Isotype:

IgG

Purification:

Affinity purification

Protein Background

This gene encodes a protein that belongs to the centromere protein family. During cell division, this protein plays a structural role in the maintenance of centrosome integrity and normal spindle morphology, and it is involved in microtubule disassembly at the centrosome. This protein can function as a transcriptional coactivator in the Stat5 signaling pathway, and also as a coactivator of NF-kappaB-mediated transcription, likely via its interaction with the coactivator p300/CREB-binding protein. Mutations in this gene are associated with primary autosomal recessive microcephaly, a disorder characterized by severely reduced brain size and mental retardation. Alternatively spliced transcript variants have been found for this gene.

Immunogen information

Gene ID:

55835

Uniprot

Q9HC77

Synonyms:

CENPJ; BM032; CENP-J; CPAP; LAP; LIP1; MCPH6; SASS4; SCKL4; Sas-4

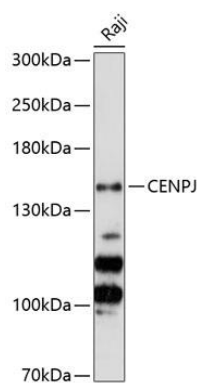
Immunogen:

Recombinant fusion protein containing a sequence corresponding to amino acids 1069-1338 of human CENPJ (NP_060921.3).

Storage:

Store at -20°C. Avoid freeze / thaw cycles. Buffer: PBS with 0.02% sodium azide, 50% glycerol, pH7.3.

Product Images



Western blot analysis of extracts of Raji cells, using CENPJ Antibody (CAB8721) at 1:3000 dilution. Secondary antibody: HRP Goat Anti-Rabbit IgG (H+L) (CABS014) at 1:10000 dilution. Lysates/proteins: 25ug per lane. Blocking buffer: 3% nonfat dry milk in TBST. Detection: ECL Basic Kit (CABM00020). Exposure time: 60s.