

# MYL9 Rabbit Monoclonal Antibody



CAB8738

## Product Information

### Size:

20uL, 50uL, 100uL, 200uL

### Observed MW:

20KDa

### Calculated MW:

18kDa

### Applications:

WB

### Reactivity:

Human, Mouse

## Protein Background

Myosin, a structural component of muscle, consists of two heavy chains and four light chains. The protein encoded by this gene is a myosin light chain that may regulate muscle contraction by modulating the ATPase activity of myosin heads. The encoded protein binds calcium and is activated by myosin light chain kinase. Two transcript variants encoding different isoforms have been found for this gene. [provided by RefSeq, Jul 2008]

## Immunogen information

### Gene ID:

10398

### Uniprot

P24844

### Synonyms:

LC20; MLC-2C; MLC2; MRLC1; MYRL2

## Antibody Information

### Recommended dilutions:

WB 1:500 - 1:2000

### Source:

Rabbit

### Isotype:

IgG

### Purification:

Affinity purification

### Immunogen:

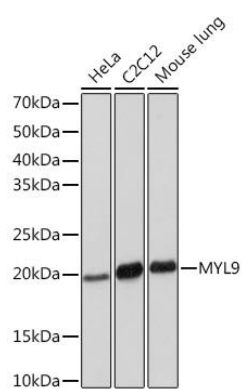
A synthesized peptide derived from human MYL9

### Storage:

Store at -20°C. Avoid freeze / thaw cycles. Buffer: PBS with 0.02% sodium azide, 0.05% BSA, 50% glycerol, pH7.3.

## Product Images

---



Western blot - MYL9 Rabbit mAb (CAB8738)