

MSH2 Rabbit Monoclonal Antibody



CAB8740

Product Information

Size:

20uL, 50uL, 100uL, 200uL

Observed MW:

105KDa

Calculated MW:

105kDa

Applications:

WB IHC

Reactivity:

Human, Mouse, Rat

Protein Background

This locus is frequently mutated in hereditary nonpolyposis colon cancer (HNPCC). When cloned, it was discovered to be a human homolog of the E. coli mismatch repair gene mutS, consistent with the characteristic alterations in microsatellite sequences (RER+ phenotype) found in HNPCC. Two transcript variants encoding different isoforms have been found for this gene. [provided by RefSeq, Apr 2012]

Immunogen information

Gene ID:

4436

Uniprot

P43246

Synonyms:

COCA1; FCC1; HNPCC; HNPCC1; LCFS2

Antibody Information

Recommended dilutions:

WB 1:500 - 1:2000 IHC 1:50
- 1:200

Source:

Rabbit

Isotype:

IgG

Purification:

Affinity purification

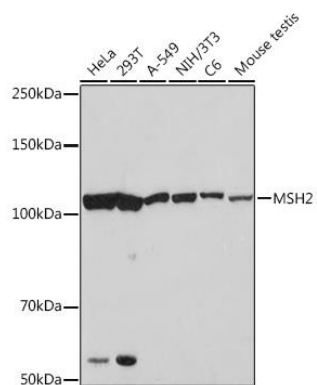
Immunogen:

A synthesized peptide derived from human MSH2

Storage:

Store at -20°C. Avoid freeze / thaw cycles. Buffer: PBS with 0.02% sodium azide, 0.05% BSA, 50% glycerol, pH7.3.

Product Images



Western blot - MSH2 Rabbit mAb (CAB8740)