

# EEF1G Rabbit Monoclonal Antibody



CAB8744

## Product Information

### Size:

20uL, 50uL, 100uL, 200uL

### Observed MW:

50KDa

### Calculated MW:

48kDa

### Applications:

WB IHC IF

### Reactivity:

Human, Mouse, Rat

## Protein Background

This gene encodes a subunit of the elongation factor-1 complex, which is responsible for the enzymatic delivery of aminoacyl tRNAs to the ribosome. This subunit contains an N-terminal glutathione transferase domain, which may be involved in regulating the assembly of multisubunit complexes containing this elongation factor and aminoacyl-tRNA synthetases. [provided by RefSeq, Jul 2008]

## Immunogen information

### Gene ID:

1937

### Uniprot

P26641

### Synonyms:

EF1G; GIG35

## Antibody Information

### Recommended dilutions:

WB 1:500 - 1:2000 IHC 1:50  
- 1:200 IF 1:50 - 1:200

### Source:

Rabbit

### Isotype:

IgG

### Purification:

Affinity purification

### Immunogen:

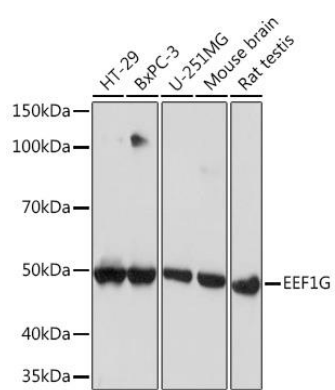
A synthesized peptide derived from human EEF1G

### Storage:

Store at -20°C. Avoid freeze / thaw cycles. Buffer: PBS with 0.02% sodium azide, 0.05% BSA, 50% glycerol, pH7.3.

## Product Images

---



Western blot - EEF1G Rabbit mAb (CAB8744)