

TTC1 Rabbit Polyclonal Antibody



CAB8745

Product Information

Size:

20uL, 50uL, 100uL, 200uL

Observed MW:

37kDa

Calculated MW:

33kDa

Applications:

WB

Reactivity:

Human

Protein Background

This gene encodes a protein that belongs to the tetratricopeptide repeat superfamily of proteins. The encoded protein plays a role in protein-protein interactions, and binds to the Galpha subunit of G protein-coupled receptors to activate the Ras signaling pathway. Alternate splicing results in multiple transcript variants.

Immunogen information

Gene ID:

7265

Uniprot

Q99614

Synonyms:

TTC1; TPR1

Antibody Information

Recommended dilutions:

WB 1:500 - 1:2000

Source:

Rabbit

Isotype:

IgG

Purification:

Affinity purification

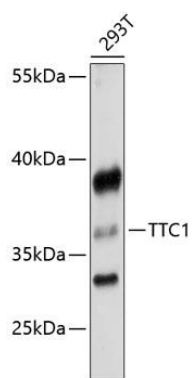
Immunogen:

Recombinant fusion protein containing a sequence corresponding to amino acids 1-292 of human TTC1 (NP_003305.1).

Storage:

Store at -20°C. Avoid freeze / thaw cycles. Buffer: PBS with 0.02% sodium azide, 50% glycerol, pH7.3.

Product Images



Western blot analysis of extracts of 293T cells, using TTC1 antibody (CAB8745) at 1:3000 dilution. Secondary antibody: HRP Goat Anti-Rabbit IgG (H+L) (CABS014) at 1:10000 dilution. Lysates/proteins: 25ug per lane. Blocking buffer: 3% nonfat dry milk in TBST. Detection: ECL Enhanced Kit (CABM00021). Exposure time: 30s.