

# TLR5 Rabbit Monoclonal Antibody



CAB8765

---

## Product Information

### Size:

20uL, 50uL, 100uL, 200uL

### Observed MW:

105KDa

### Calculated MW:

97kDa

### Applications:

WB

### Reactivity:

Human, Mouse

## Antibody Information

### Recommended dilutions:

WB 1:500 - 1:2000

### Source:

Rabbit

### Isotype:

IgG

### Purification:

Affinity purification

## Protein Background

This gene encodes a member of the toll-like receptor (TLR) family, which plays a fundamental role in pathogen recognition and activation of innate immune responses. These receptors recognize distinct pathogen-associated molecular patterns that are expressed on infectious agents. The protein encoded by this gene recognizes bacterial flagellin, the principal component of bacterial flagella and a virulence factor. The activation of this receptor mobilizes the nuclear factor NF-kappaB, which in turn activates a host of inflammatory-related target genes. Mutations in this gene have been associated with both resistance and susceptibility to systemic lupus erythematosus, and susceptibility to Legionnaire disease.[provided by RefSeq, Dec 2009]

## Immunogen information

### Gene ID:

7100

### Uniprot

O60602

### Synonyms:

MELIOS; SLE1; SLEB1; TIL3

### Immunogen:

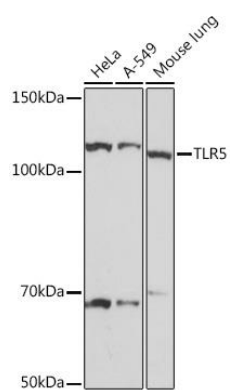
A synthesized peptide derived from human TLR5

### Storage:

Store at -20°C. Avoid freeze / thaw cycles. Buffer: PBS with 0.02% sodium azide, 0.05% BSA, 50% glycerol, pH7.3.

## Product Images

---



Western blot - TLR5 Rabbit mAb (CAB8765)