

# NR2E1 Rabbit Monoclonal Antibody



CAB8768

## Product Information

### Size:

20uL, 50uL, 100uL, 200uL

### Observed MW:

48KDa

### Calculated MW:

48kDa

### Applications:

WB

### Reactivity:

Human, Mouse, Rat

## Protein Background

The protein encoded by this gene is an orphan receptor involved in retinal development. The encoded protein also regulates adult neural stem cell proliferation and may be involved in control of aggressive behavior. Two transcript variants encoding different isoforms have been found for this gene. [provided by RefSeq, Aug 2015]

## Immunogen information

### Gene ID:

7101

### Uniprot

Q9Y466

### Synonyms:

TLL; TLX; XTLL

## Antibody Information

### Recommended dilutions:

WB 1:500 - 1:2000

### Source:

Rabbit

### Isotype:

IgG

### Purification:

Affinity purification

### Immunogen:

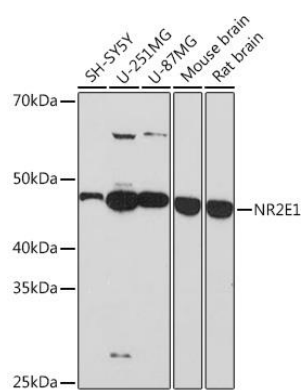
A synthesized peptide derived from human NR2E1

### Storage:

Store at -20°C. Avoid freeze / thaw cycles. Buffer: PBS with 0.02% sodium azide, 0.05% BSA, 50% glycerol, pH7.3.

## Product Images

---



Western blot - NR2E1 Rabbit mAb (CAB8768)